



TMOD2 mouse mAb

Catalog No	BYmab-07899
Isotype	IgG
Reactivity	Human; Mouse;Rat
Applications	WB
Gene Name	TMOD2 NTMOD
Protein Name	TMOD2
Immunogen	Synthesized peptide derived from human TMOD2 AA range: 138-188
Specificity	This antibody detects endogenous levels of TMOD2 at Human/Mouse/Rat
Formulation	Liquid in PBS containing 50% glycerol, 0.5% BSA and 0.13% sodium azide.
Source	Monoclonal, Mouse,IgG
Purification	The antibody was affinity-purified from mouse antiserum by affinity-chromatography using epitope-specific immunogen.
Dilution	WB 1:500-2000
Concentration	1 mg/ml
Purity	≥90%
Storage Stability	-20°C/1 year
Synonyms	Tropomodulin-2 (Neuronal tropomodulin) (N-Tmod)
Observed Band	38kD
Cell Pathway	Cytoplasm, cytoskeleton .
Tissue Specificity	Neuronal-tissue specific.
Function	function:Blocks the elongation and depolymerization of the actin filaments at the pointed end. The Tmod/TM complex contributes to the formation of the short actin protofilament, which in turn defines the geometry of the membrane skeleton.,similarity:Belongs to the tropomodulin family.,subunit:Binds to the N-terminus of tropomyosin and to actin.,tissue specificity:Neuronal-tissue specific.,
Background	This gene encodes a neuronal-specific member of the tropomodulin family of actin-regulatory proteins. The encoded protein caps the pointed end of actin filaments preventing both elongation and depolymerization. The capping activity of this protein is dependent on its association with tropomyosin. Alternatively spliced transcript variants encoding different isoforms have been described.

Nanjing BYabscience technology Co.,Ltd



[provided by RefSeq, Dec 2008],

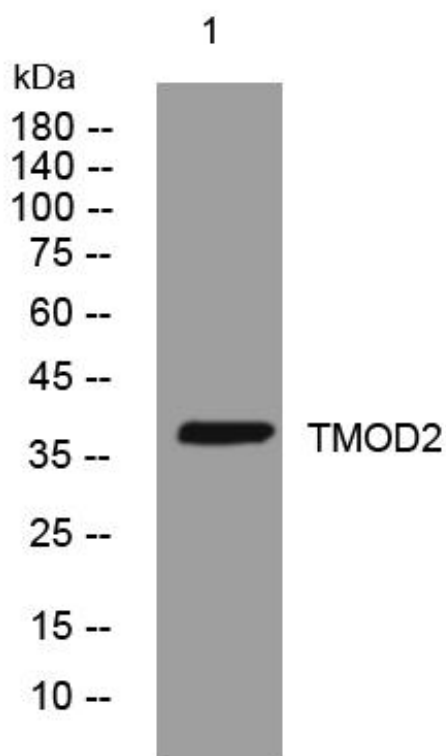
matters needing attention

Avoid repeated freezing and thawing!

Usage suggestions

This product can be used in immunological reaction related experiments. For more information, please consult technical personnel.

Products Images



Western Blot analysis of various cells using TMOD2 mouse mAb

Nanjing BYabscience technology Co.,Ltd

网址: www.njbybio.com

官方热线: 025-5229-8998

监督电话: 15950492658