



# IFI30 mouse mAb

<b>Catalog No</b>	BYmab-07892
<b>Isotype</b>	IgG
<b>Reactivity</b>	Human; Mouse;Rat
<b>Applications</b>	WB
<b>Gene Name</b>	IFI30 GILT IP30
<b>Protein Name</b>	IFI30
<b>Immunogen</b>	Synthesized peptide derived from human IFI30 AA range: 3-53
<b>Specificity</b>	This antibody detects endogenous levels of IFI30 at Human/Mouse/Rat
<b>Formulation</b>	Liquid in PBS containing 50% glycerol, 0.5% BSA and 0.06% sodium azide.
<b>Source</b>	Monoclonal, Mouse,IgG
<b>Purification</b>	The antibody was affinity-purified from mouse antiserum by affinity-chromatography using epitope-specific immunogen.
<b>Dilution</b>	WB 1:500-2000
<b>Concentration</b>	1 mg/ml
<b>Purity</b>	≥90%
<b>Storage Stability</b>	-20°C/1 year
<b>Synonyms</b>	Gamma-interferon-inducible lysosomal thiol reductase (EC 1.8.-.-) (Gamma-interferon-inducible protein IP-30) (Legumaturain)
<b>Observed Band</b>	25kD
<b>Cell Pathway</b>	Secreted . Lysosome .
<b>Tissue Specificity</b>	Lung,Skin,
<b>Function</b>	function:Cleaves disulfide bonds in proteins by reduction. May facilitate the complete unfolding of proteins destined for lysosomal degradation. May be involved in MHC class II-restricted antigen processing.,induction:Expressed constitutively in antigen-presenting cells and induced by IFN-gamma in other cell types.,PTM:N-glycosylated. Sugar chains contain mannose-6-phosphate.,similarity:Belongs to the GILT family.,
<b>Background</b>	The protein encoded by this gene is a lysosomal thiol reductase that at low pH can reduce protein disulfide bonds. The enzyme is expressed constitutively in antigen-presenting cells and induced by gamma-interferon in other cell types. This enzyme has an important role in MHC class II-restricted antigen processing.

**Nanjing BYabscience technology Co.,Ltd**



[provided by RefSeq, Jul 2008],

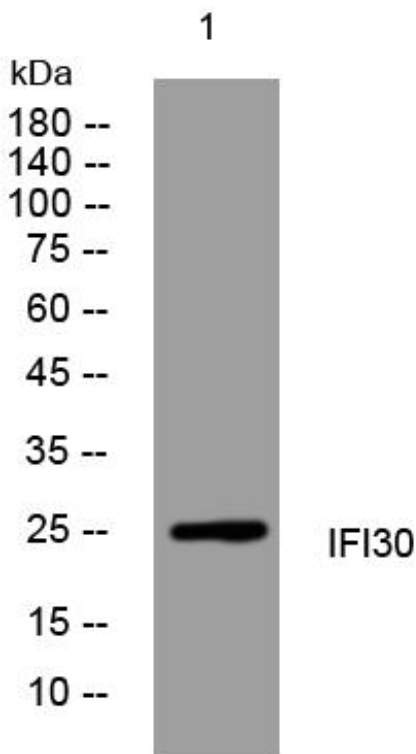
**matters needing attention**

Avoid repeated freezing and thawing!

**Usage suggestions**

This product can be used in immunological reaction related experiments. For more information, please consult technical personnel.

## Products Images



Western Blot analysis of various cells using IFI30 mouse mAb

Nanjing BYabscience technology Co.,Ltd

网址: [www.njbybio.com](http://www.njbybio.com)

官方热线: 025-5229-8998

监督电话: 15950492658