



MSPD3 Monoclonal Antibody

Catalog No	BYmab-07886
Isotype	IgG
Reactivity	Human;Mouse
Applications	WB
Gene Name	MOSPD3
Protein Name	Motile sperm domain-containing protein 3
Immunogen	Synthesized peptide derived from part region of human protein
Specificity	MSPD3 Monoclonal Antibody detects endogenous levels of protein.
Formulation	Liquid in PBS containing 50% glycerol, and 0.02% sodium azide.
Source	Monoclonal, Mouse,IgG
Purification	The antibody was affinity-purified from mouse antiserum by affinity-chromatography using epitope-specific immunogen.
Dilution	WB 1:500-2000
Concentration	1 mg/ml
Purity	≥90%
Storage Stability	-20°C/1 year
Synonyms	
Observed Band	25kD
Cell Pathway	Membrane ; Multi-pass membrane protein .
Tissue Specificity	Eye,Pancreas,
Function	similarity:Contains 1 MSP domain.,
Background	This gene encodes a multi-pass membrane protein with a major sperm protein (MSP) domain. The deletion of a similar mouse gene is associated with defective cardiac development and neonatal lethality. Alternate transcriptional splice variants, encoding different isoforms, have been described. [provided by RefSeq, Jul 2008],
matters needing attention	Avoid repeated freezing and thawing!

Nanjing BYabscience technology Co.,Ltd

网址: www.njbybio.com

官方热线: 025-5229-8998

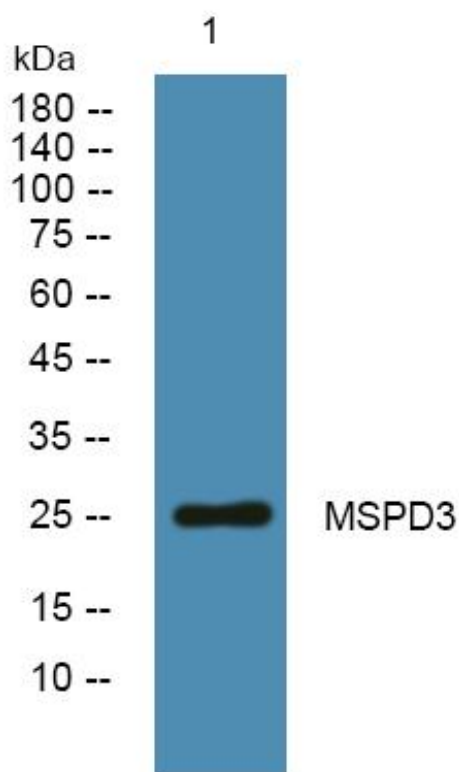
监督电话: 15950492658



Usage suggestions

This product can be used in immunological reaction related experiments. For more information, please consult technical personnel.

Products Images



Western Blot analysis of various cells using MSPD3 Monoclonal Antibody

Nanjing BYabs science technology Co.,Ltd

网址: www.njbybio.com

官方热线: 025-5229-8998

监督电话: 15950492658