



# OSR1 Monoclonal Antibody

Catalog No	BYmab-07869
Isotype	IgG
Reactivity	Human;Mouse;Rat
Applications	WB
Gene Name	OSR1 ODD
Protein Name	Protein odd-skipped-related 1
Immunogen	Synthesized peptide derived from part region of human protein
Specificity	OSR1 Monoclonal Antibody detects endogenous levels of protein.
Formulation	Liquid in PBS containing 50% glycerol, and 0.02% sodium azide.
Source	Monoclonal, Mouse,IgG
Purification	The antibody was affinity-purified from mouse antiserum by affinity-chromatography using epitope-specific immunogen.
Dilution	WB 1:500-2000
Concentration	1 mg/ml
Purity	≥90%
Storage Stability	-20°C/1 year
Synonyms	
Observed Band	29kD
Cell Pathway	Nucleus .
Tissue Specificity	Expressed in adult colon, small intestine, prostate, testis, and fetal lung.
Function	similarity:Belongs to the Odd C2H2-type zinc-finger protein family.,similarity:Contains 3 C2H2-type zinc fingers.,tissue specificity:Expressed in adult colon, small intestine, prostate, testis, and fetal lung.,
Background	similarity:Belongs to the Odd C2H2-type zinc-finger protein family.,similarity:Contains 3 C2H2-type zinc fingers.,tissue specificity:Expressed in adult colon, small intestine, prostate, testis, and fetal lung.,
matters needing attention	Avoid repeated freezing and thawing!

Nanjing BYabscience technology Co.,Ltd

网址: [www.njbybio.com](http://www.njbybio.com)

官方热线: 025-5229-8998

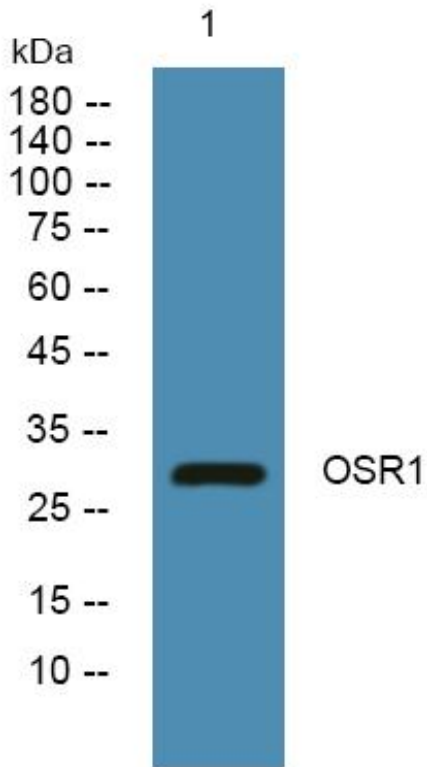
监督电话: 15950492658



### Usage suggestions

This product can be used in immunological reaction related experiments. For more information, please consult technical personnel.

## Products Images



Western Blot analysis of various cells using OSR1 Monoclonal Antibody

Nanjing BYabscience technology Co.,Ltd

网址: [www.njbybio.com](http://www.njbybio.com)

官方热线: 025-5229-8998

监督电话: 15950492658