



MIEN1 Monoclonal Antibody

| | |
|---------------------------|--|
| Catalog No | BYmab-07848 |
| Isotype | IgG |
| Reactivity | Human;Mouse |
| Applications | WB |
| Gene Name | MIEN1 C17orf37 RDX12 XTP4 |
| Protein Name | Migration and invasion enhancer 1 (HBV X-transactivated gene 4 protein) (HBV XAg-transactivated protein 4) (Protein C35) |
| Immunogen | Synthesized peptide derived from part region of human protein AA range: 1-50 |
| Specificity | MIEN1 Monoclonal Antibody detects endogenous levels of protein. |
| Formulation | Liquid in PBS containing 50% glycerol, and 0.02% sodium azide. |
| Source | Monoclonal, Mouse,IgG |
| Purification | The antibody was affinity-purified from mouse antiserum by affinity-chromatography using epitope-specific immunogen. |
| Dilution | WB 1:500-2000 |
| Concentration | 1 mg/ml |
| Purity | ≥90% |
| Storage Stability | -20°C/1 year |
| Synonyms | |
| Observed Band | 12kD |
| Cell Pathway | Cytoplasm, cytosol. Cell membrane; Lipid-anchor; Cytoplasmic side. Concentrates at the leading edge of migrating cells. Localizes outside membrane raft regions. |
| Tissue Specificity | Among normal tissues, present only in Leydig cells. Strongly up-regulated in breast cancers and in brain cancer distant metastasis (at protein level). Up-regulated in prostate cancer cells and in the higher grades of prostate adenocarcinoma (at protein level). |
| Function | function:May be involved in a redox-related process .,similarity:Belongs to the SeiWTH family., |
| Background | function:May be involved in a redox-related process .,similarity:Belongs to the SeiWTH family., |
| matters needing attention | Avoid repeated freezing and thawing! |

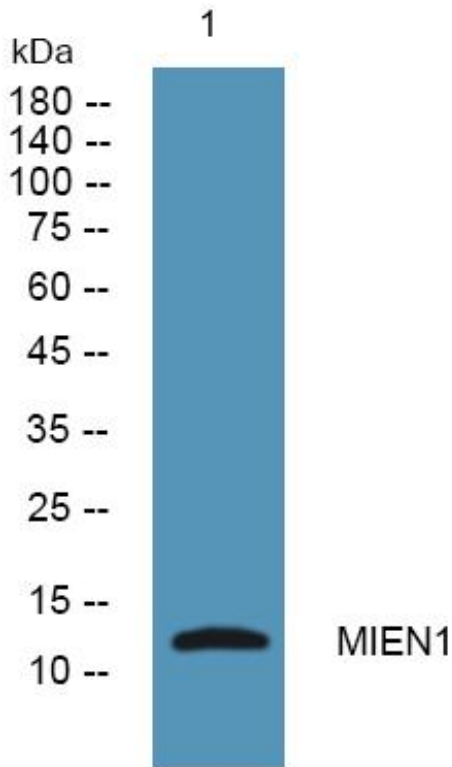
Nanjing BYabscience technology Co.,Ltd



Usage suggestions

This product can be used in immunological reaction related experiments. For more information, please consult technical personnel.

Products Images



Western Blot analysis of various cells using MIEN1 Monoclonal Antibody

Nanjing BYabs science technology Co.,Ltd

网址: www.njbybio.com

官方热线: 025-5229-8998

监督电话: 15950492658