



RBMS1 Monoclonal Antibody

Catalog No	BYmab-07833
Isotype	IgG
Reactivity	Human;Mouse;Rat
Applications	WB
Gene Name	RBMS1 C2orf12 MSSP MSSP1 SCR2
Protein Name	RNA-binding motif, single-stranded-interacting protein 1 (Single-stranded DNA-binding protein MSSP-1) (Suppressor of CDC2 with RNA-binding motif 2)
Immunogen	Synthesized peptide derived from part region of human protein
Specificity	RBMS1 Monoclonal Antibody detects endogenous levels of protein.
Formulation	Liquid in PBS containing 50% glycerol, and 0.02% sodium azide.
Source	Monoclonal, Mouse,IgG
Purification	The antibody was affinity-purified from mouse antiserum by affinity-chromatography using epitope-specific immunogen.
Dilution	WB 1:500-2000
Concentration	1 mg/ml
Purity	≥90%
Storage Stability	-20°C/1 year
Synonyms	
Observed Band	44kD
Cell Pathway	Nucleus.
Tissue Specificity	Highest amounts are found in placenta, lung and heart.
Function	developmental stage:Expressed at highest levels during the G1 to S transition of the cell cycle.,function:Single-stranded DNA binding protein that interacts with the region upstream of the C-myc gene. Binds specifically to the DNA sequence motif 5'-[AT]CT[AT][AT]T-3'. Probably has a role in DNA replication.,sequence caution:Translation N-terminally extended.,similarity:Contains 2 RRM (RNA recognition motif) domains.,tissue specificity:Highest amounts are found in placenta, lung and heart.,
Background	This gene encodes a member of a small family of proteins which bind single stranded DNA/RNA. These proteins are characterized by the presence of two sets of ribonucleoprotein consensus sequence (RNP-CS) that contain conserved motifs, RNP1 and RNP2, originally described in RNA binding proteins, and

Nanjing BYabscience technology Co.,Ltd



required for DNA binding. These proteins have been implicated in such diverse functions as DNA replication, gene transcription, cell cycle progression and apoptosis. Several transcript variants, resulting from alternative splicing and encoding different isoforms, have been described. A pseudogene for this locus is found on chromosome 12. [provided by RefSeq, Feb 2009],

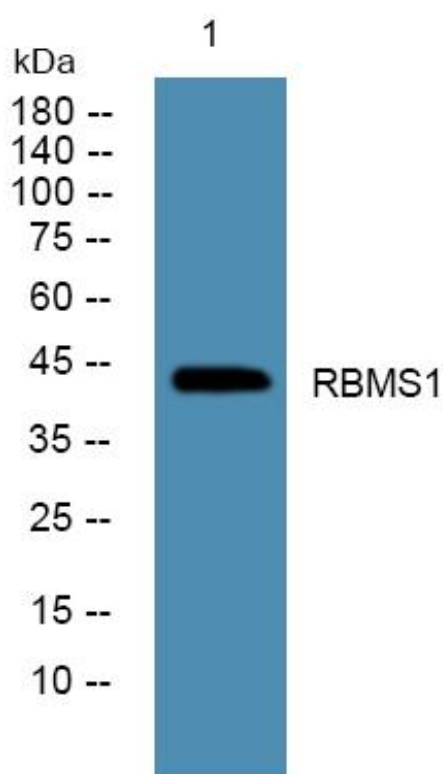
matters needing attention

Avoid repeated freezing and thawing!

Usage suggestions

This product can be used in immunological reaction related experiments. For more information, please consult technical personnel.

Products Images



Western Blot analysis of various cells using RBMS1 Monoclonal Antibody