



# RAMP2 Monoclonal Antibody

Catalog No	BYmab-07831
Isotype	IgG
Reactivity	Human;Mouse;Rat
Applications	WB
Gene Name	RAMP2
Protein Name	Receptor activity-modifying protein 2 (Calcitonin-receptor-like receptor activity-modifying protein 2) (CRLR activity-modifying protein 2)
Immunogen	Synthesized peptide derived from part region of human protein
Specificity	RAMP2 Monoclonal Antibody detects endogenous levels of protein.
Formulation	Liquid in PBS containing 50% glycerol, and 0.02% sodium azide.
Source	Monoclonal, Mouse,IgG
Purification	The antibody was affinity-purified from mouse antiserum by affinity-chromatography using epitope-specific immunogen.
Dilution	WB 1:500-2000
Concentration	1 mg/ml
Purity	≥90%
Storage Stability	-20°C/1 year
Synonyms	
Observed Band	19kD
Cell Pathway	Membrane; Single-pass type I membrane protein.
Tissue Specificity	Strongly expressed in lung, breast, immune system and fetal tissues.
Function	function:Transports the calcitonin gene-related peptide type 1 receptor (CALCRL) to the plasma membrane. Acts as a receptor for adrenomedullin (AM) together with CALCRL.,similarity:Belongs to the RAMP family.,subunit:Heterodimer of CALCRL and RAMP2.,tissue specificity:Strongly expressed in lung, breast, immune system and fetal tissues.,
Background	The protein encoded by this gene is a member of the RAMP family of single-transmembrane-domain proteins, called receptor (calcitonin) activity modifying proteins (RAMPs). RAMPs are type I transmembrane proteins with an extracellular N terminus and a cytoplasmic C terminus. RAMPs are required to transport calcitonin-receptor-like receptor (CRLR) to the plasma membrane. CRLR, a receptor with seven transmembrane domains, can function as either a

Nanjing BYabscience technology Co.,Ltd



calcitonin-gene-related peptide (CGRP) receptor or an adrenomedullin receptor, depending on which members of the RAMP family are expressed. In the presence of this (RAMP2) protein, CRLR functions as an adrenomedullin receptor. The RAMP2 protein is involved in core glycosylation and transportation of adrenomedullin receptor to the cell surface. [provided by RefSeq, Jul 2008],

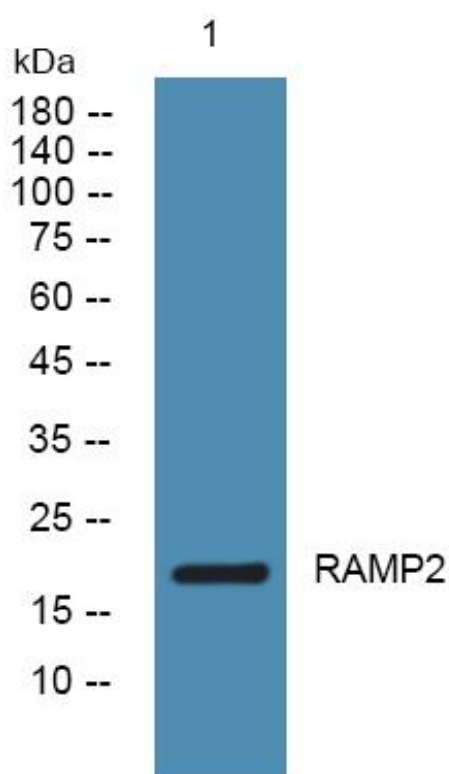
**matters needing attention**

Avoid repeated freezing and thawing!

**Usage suggestions**

This product can be used in immunological reaction related experiments. For more information, please consult technical personnel.

## Products Images



Western Blot analysis of various cells using RAMP2 Monoclonal Antibody