



# RAB14 Monoclonal Antibody

|                           |  |
|---------------------------|--|
| <b>Catalog No</b>         | BYmab-07829  |
| <b>Isotype</b>            | IgG  |
| <b>Reactivity</b>         | Human;Mouse;Rat  |
| <b>Applications</b>       | WB   |
| <b>Gene Name</b>          | RAB14  |
| <b>Protein Name</b>       | Ras-related protein Rab-14   |
| <b>Immunogen</b>          | Synthesized peptide derived from part region of human protein  |
| <b>Specificity</b>        | RAB14 Monoclonal Antibody detects endogenous levels of protein.  |
| <b>Formulation</b>        | Liquid in PBS containing 50% glycerol, and 0.02% sodium azide.   |
| <b>Source</b>             | Monoclonal, Mouse,IgG  |
| <b>Purification</b>       | The antibody was affinity-purified from mouse antiserum by affinity-chromatography using epitope-specific immunogen.   |
| <b>Dilution</b>           | WB 1:500-2000  |
| <b>Concentration</b>      | 1 mg/ml  |
| <b>Purity</b>             | ≥90%   |
| <b>Storage Stability</b>  | -20°C/1 year   |
| <b>Synonyms</b>           |  |
| <b>Observed Band</b>      | 23kD   |
| <b>Cell Pathway</b>       | Recycling endosome . Early endosome membrane ; Lipid-anchor ; Cytoplasmic side . Golgi apparatus membrane ; Lipid-anchor ; Cytoplasmic side . Golgi apparatus, trans-Golgi network membrane ; Lipid-anchor ; Cytoplasmic side . Cytoplasmic vesicle, phagosome . Recruited to recycling endosomes by DENND6A (PubMed:22595670). Recruited to phagosomes containing S.aureus or M.tuberculosis (PubMed:21255211). . |
| <b>Tissue Specificity</b> | Adrenal gland,B-cell lymphoma,Brain,Liver,Melanoma,Placenta,Platele  |
| <b>Function</b>           | function:May be involved in vesicular trafficking and neurotransmitter release.,similarity:Belongs to the small GTPase superfamily. Rab family.,   |
| <b>Background</b>         | RAB14 belongs to the large RAB family of low molecular mass GTPases that are involved in intracellular membrane trafficking. These proteins act as molecular switches that flip between an inactive GDP-bound state and an active GTP-bound state in which they recruit downstream effector proteins onto membranes (Junutula et al., 2004 [PubMed 15004230]).[supplied by OMIM, Mar 2009],                        |

**Nanjing BYabscience technology Co.,Ltd**



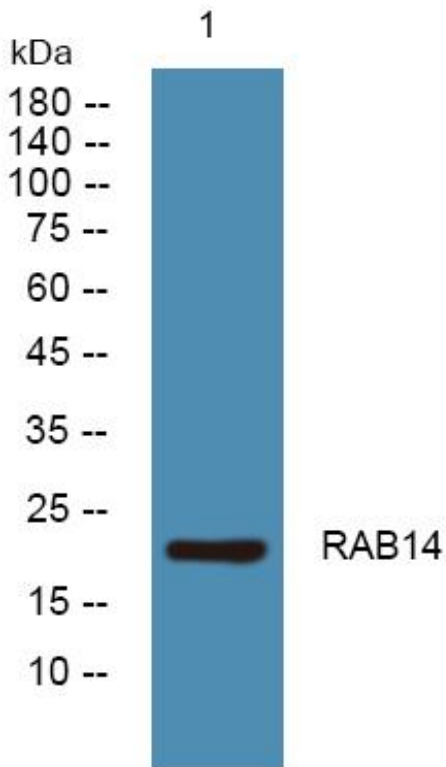
**matters needing attention**

Avoid repeated freezing and thawing!

**Usage suggestions**

This product can be used in immunological reaction related experiments. For more information, please consult technical personnel.

## Products Images



Western Blot analysis of various cells using RAB14 Monoclonal Antibody