



# ATOH7 Monoclonal Antibody

Catalog No	BYmab-07815
Isotype	IgG
Reactivity	Human;Mouse
Applications	WB
Gene Name	ATOH7 ATH5 BHLHA13
Protein Name	Protein atonal homolog 7 (Class A basic helix-loop-helix protein 13) (bHLHa13) (Helix-loop-helix protein hATH-5) (hATH5)
Immunogen	Synthesized peptide derived from part region of human protein
Specificity	ATOH7 Monoclonal Antibody detects endogenous levels of protein.
Formulation	Liquid in PBS containing 50% glycerol, and 0.02% sodium azide.
Source	Monoclonal, Mouse,IgG
Purification	The antibody was affinity-purified from mouse antiserum by affinity-chromatography using epitope-specific immunogen.
Dilution	WB 1:500-2000
Concentration	1 mg/ml
Purity	≥90%
Storage Stability	-20°C/1 year
Synonyms	
Observed Band	16kD
Cell Pathway	Nucleus . Perikaryon . Cell projection, axon .
Tissue Specificity	Eye,
Function	function:Transcription factor involved in the differentiation of retinal ganglion cells.,similarity:Contains 1 basic helix-loop-helix (bHLH) domain.,
Background	This intronless gene encodes a member of the basic helix-loop-helix family of transcription factors, with similarity to Drosophila atonal gene that controls photoreceptor development. Studies in mice suggest that this gene plays a central role in retinal ganglion cell and optic nerve formation. Mutations in this gene are associated with nonsyndromic congenital retinal nonattachment. [provided by RefSeq, Dec 2011],
matters needing attention	Avoid repeated freezing and thawing!

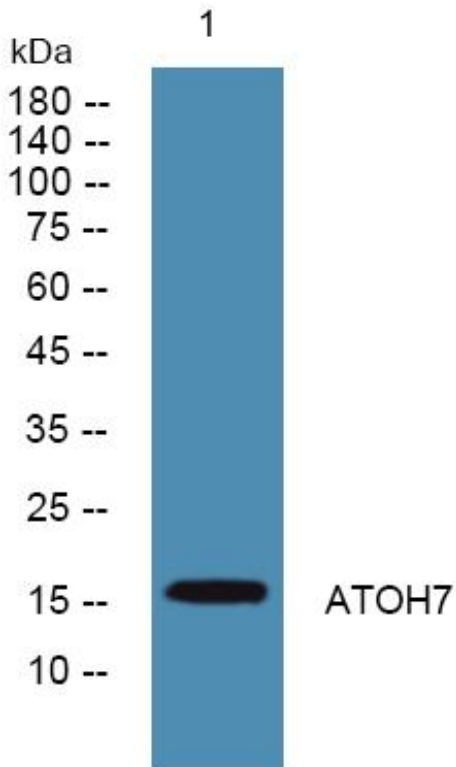
Nanjing BYabscience technology Co.,Ltd



### Usage suggestions

This product can be used in immunological reaction related experiments. For more information, please consult technical personnel.

## Products Images



Western Blot analysis of various cells using ATOH7 Monoclonal Antibody

Nanjing BYabs science technology Co.,Ltd

网址: [www.njbybio.com](http://www.njbybio.com)

官方热线: 025-5229-8998

监督电话: 15950492658