



# ELAV1 Monoclonal Antibody

<b>Catalog No</b>	BYmab-07788
<b>Isotype</b>	IgG
<b>Reactivity</b>	Human;Mouse
<b>Applications</b>	WB
<b>Gene Name</b>	ELAVL1 HUR
<b>Protein Name</b>	ELAV-like protein 1 (Hu-antigen R) (HuR)
<b>Immunogen</b>	Synthesized peptide derived from part region of human protein
<b>Specificity</b>	ELAV1 Monoclonal Antibody detects endogenous levels of protein.
<b>Formulation</b>	Liquid in PBS containing 50% glycerol, and 0.02% sodium azide.
<b>Source</b>	Monoclonal, Mouse,IgG
<b>Purification</b>	The antibody was affinity-purified from mouse antiserum by affinity-chromatography using epitope-specific immunogen.
<b>Dilution</b>	WB 1:500-2000
<b>Concentration</b>	1 mg/ml
<b>Purity</b>	≥90%
<b>Storage Stability</b>	-20°C/1 year
<b>Synonyms</b>	
<b>Observed Band</b>	35kD
<b>Cell Pathway</b>	Cytoplasm . Nucleus . Cytoplasm, Stress granule . Cytoplasm, P-body . Translocates into the cytoplasm following phosphorylation by MAPKAPK2 (PubMed:14517288). Likewise, phosphorylation by PRKCD promotes translocation from the nucleus into the cytoplasm, where it is associated with free and cytoskeleton-bound polysomes (PubMed:18285462).Localizes to the stress granules in the presence of PLEKHN1 (By similarity). .
<b>Tissue Specificity</b>	Ubiquitous. Detected in brain, liver, thymus and muscle.
<b>Function</b>	function:Binds avidly to the AU-rich element in FOS and IL3/interleukin-3 mRNAs. In the case of the FOS AU-rich element, HUR binds to a core element of 27 nucleotides that contain AUUUA, AUUUUA, and AUUUUUA motifs.,PTM:Methylated at Arg-217 by CARM1 in macrophages in response to LPS challenge.,similarity:Belongs to the RRM elav family.,similarity:Contains 3 RRM (RNA recognition motif) domains.,subunit:Interacts with ANP32A.,tissue specificity:Ubiquitous.,

**Nanjing BYabscience technology Co.,Ltd**



## Background

ELAV like RNA binding protein 1(ELAVL1) Homo sapiens The protein encoded by this gene is a member of the ELAVL family of RNA-binding proteins that contain several RNA recognition motifs, and selectively bind AU-rich elements (AREs) found in the 3' untranslated regions of mRNAs. AREs signal degradation of mRNAs as a means to regulate gene expression, thus by binding AREs, the ELAVL family of proteins play a role in stabilizing ARE-containing mRNAs. This gene has been implicated in a variety of biological processes and has been linked to a number of diseases, including cancer. It is highly expressed in many cancers, and could be potentially useful in cancer diagnosis, prognosis, and therapy. [provided by RefSeq, Sep 2012],

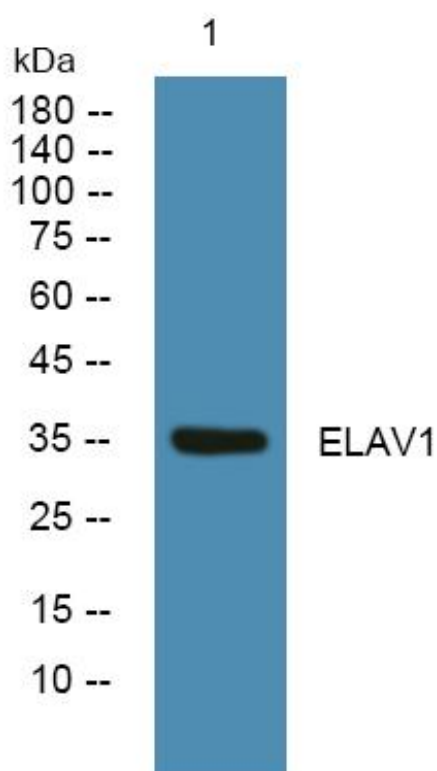
## matters needing attention

Avoid repeated freezing and thawing!

## Usage suggestions

This product can be used in immunological reaction related experiments. For more information, please consult technical personnel.

## Products Images



Western Blot analysis of various cells using ELAV1 Monoclonal Antibody