



EIF1 Monoclonal Antibody

| | |
|----------------------------------|--|
| Catalog No | BYmab-07779 |
| Isotype | IgG |
| Reactivity | Human;Mouse |
| Applications | WB |
| Gene Name | EIF1 SUI1 |
| Protein Name | Eukaryotic translation initiation factor 1 (eIF1) (A121) (Protein translation factor SUI1 homolog) (Sui1iso1) |
| Immunogen | Synthesized peptide derived from part region of human protein AA range: 1-50 |
| Specificity | EIF1 Monoclonal Antibody detects endogenous levels of protein. |
| Formulation | Liquid in PBS containing 50% glycerol, and 0.02% sodium azide. |
| Source | Monoclonal, Mouse,IgG |
| Purification | The antibody was affinity-purified from mouse antiserum by affinity-chromatography using epitope-specific immunogen. |
| Dilution | WB 1:500-2000 |
| Concentration | 1 mg/ml |
| Purity | ≥90% |
| Storage Stability | -20°C/1 year |
| Synonyms | |
| Observed Band | 12kD |
| Cell Pathway | nucleus,cytoplasm, |
| Tissue Specificity | Brain,Eye,Liver,Lung, |
| Function | function:Necessary for scanning and involved in initiation site selection. Promotes the assembly of 48S ribosomal complexes at the authentic initiation codon of a conventional capped mRNA.,similarity:Belongs to the SUI1 family.,subunit:Interacts with RENT2., |
| Background | function:Necessary for scanning and involved in initiation site selection. Promotes the assembly of 48S ribosomal complexes at the authentic initiation codon of a conventional capped mRNA.,similarity:Belongs to the SUI1 family.,subunit:Interacts with RENT2., |
| matters needing attention | Avoid repeated freezing and thawing! |

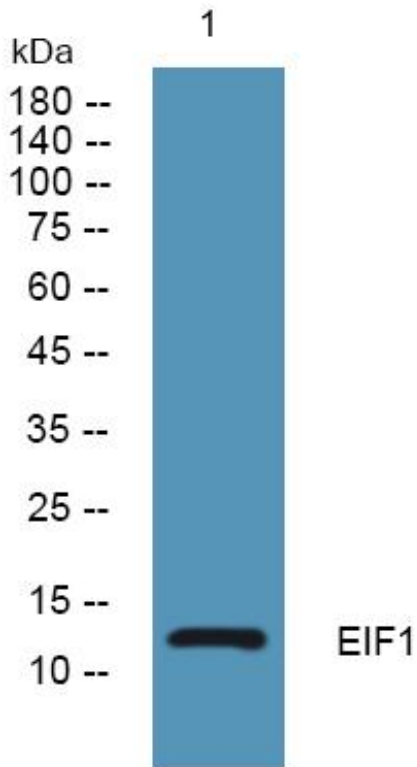
Nanjing BYabscience technology Co.,Ltd



Usage suggestions

This product can be used in immunological reaction related experiments. For more information, please consult technical personnel.

Products Images



Western Blot analysis of various cells using EIF1 Monoclonal Antibody

Nanjing BYabs science technology Co.,Ltd

网址: www.njbybio.com

官方热线: 025-5229-8998

监督电话: 15950492658