



# GON2 Monoclonal Antibody

<b>Catalog No</b>	BYmab-07772
<b>Isotype</b>	IgG
<b>Reactivity</b>	Human;Rat;Mouse;
<b>Applications</b>	WB
<b>Gene Name</b>	GNRH2
<b>Protein Name</b>	Progonadoliberin-2 (Progonadoliberin II) [Cleaved into: Gonadoliberin-2 (Gonadoliberin II) (Gonadotropin-releasing hormone II) (GnRH II) (Luliberin II) (Luteinizing hormone-releasing hormone II) (LH-R
<b>Immunogen</b>	Synthesized peptide derived from part region of human protein AA range: 1-50
<b>Specificity</b>	GON2 Monoclonal Antibody detects endogenous levels of protein.
<b>Formulation</b>	Liquid in PBS containing 50% glycerol, and 0.02% sodium azide.
<b>Source</b>	Monoclonal, Mouse,IgG
<b>Purification</b>	The antibody was affinity-purified from mouse antiserum by affinity-chromatography using epitope-specific immunogen.
<b>Dilution</b>	WB 1:500-2000
<b>Concentration</b>	1 mg/ml
<b>Purity</b>	≥90%
<b>Storage Stability</b>	-20°C/1 year
<b>Synonyms</b>	
<b>Observed Band</b>	13kD
<b>Cell Pathway</b>	Secreted.
<b>Tissue Specificity</b>	Midbrain; expressed at significantly higher levels outside the brain (up to 30-fold), particularly in the kidney, bone marrow and prostate.
<b>Function</b>	alternative products:Experimental confirmation may be lacking for some isoforms,function:Stimulates the secretion of gonadotropins; it stimulates the secretion of both luteinizing and follicle-stimulating hormones.,similarity:Belongs to the GnRH family.,tissue specificity:Midbrain; expressed at significantly higher levels outside the brain (up to 30-fold), particularly in the kidney, bone marrow and prostate.,
<b>Background</b>	gonadotropin releasing hormone 2(GNRH2) Homo sapiens This gene encodes a secreted peptide hormone and member of the gonadotropin-releasing hormone (GnRH) family of proteins. The encoded protein regulates reproductive function by stimulating the production and release of the gonadotropins

**Nanjing BYabscience technology Co.,Ltd**



follicle-stimulating hormone (FSH) and luteinizing hormone (LH). The encoded protein may inhibit endometrial, ovarian, prostate, and breast cancer cell proliferation. Alternative splicing results in multiple transcript variants. [provided by RefSeq, Jul 2015],

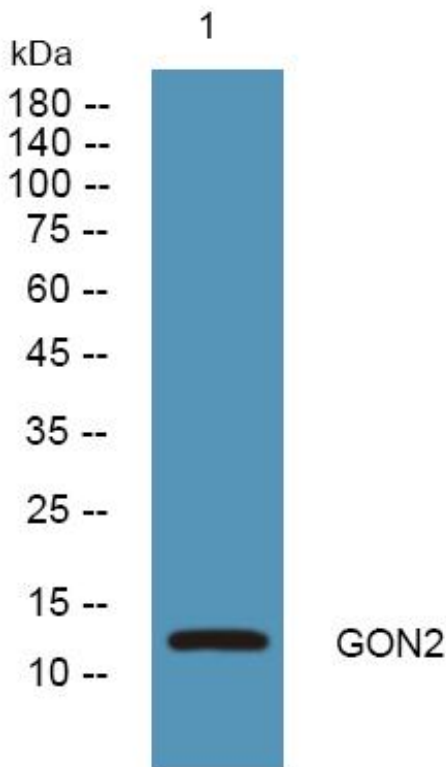
**matters needing attention**

Avoid repeated freezing and thawing!

**Usage suggestions**

This product can be used in immunological reaction related experiments. For more information, please consult technical personnel.

## Products Images



Western Blot analysis of various cells using GON2 Monoclonal Antibody

Nanjing BYabscience technology Co.,Ltd

网址: [www.njbybio.com](http://www.njbybio.com)

官方热线: 025-5229-8998

监督电话: 15950492658