



SRTD1 Monoclonal Antibody

Catalog No	BYmab-07761
Isotype	IgG
Reactivity	Human;Rat;Mouse;
Applications	WB
Gene Name	SERTAD1 SEI1
Protein Name	SERTA domain-containing protein 1 (CDK4-binding protein p34SEI1) (SEI-1) (Transcriptional regulator interacting with the PHD-bromodomain 1) (TRIP-Br1)
Immunogen	Synthesized peptide derived from part region of human protein
Specificity	SRTD1 Monoclonal Antibody detects endogenous levels of protein.
Formulation	Liquid in PBS containing 50% glycerol, and 0.02% sodium azide.
Source	Monoclonal, Mouse,IgG
Purification	The antibody was affinity-purified from mouse antiserum by affinity-chromatography using epitope-specific immunogen.
Dilution	WB 1:500-2000
Concentration	1 mg/ml
Purity	≥90%
Storage Stability	-20°C/1 year
Synonyms	
Observed Band	25kD
Cell Pathway	nucleus,cytoplasm,
Tissue Specificity	Human small intestine,Mammary gland,Uterus,
Function	function:Acts at E2F-responsive promoters to integrate signals provided by PHD- and/or bromodomain-containing transcription factors. Stimulates E2F-1/DP-1 transcriptional activity. Renders the activity of cyclin D1/CDK4 resistant to the inhibitory effects of p16(INK4a).,similarity:Contains 1 SERTA domain.,subunit:Interacts with the PHD-bromodomain of TIF1, TRIM28/TIF1B and p300/CBP. Binds to DP1. Also interacts with CDK4.,
Background	function:Acts at E2F-responsive promoters to integrate signals provided by PHD- and/or bromodomain-containing transcription factors. Stimulates E2F-1/DP-1 transcriptional activity. Renders the activity of cyclin D1/CDK4 resistant to the inhibitory effects of p16(INK4a).,similarity:Contains 1 SERTA domain.,subunit:Interacts with the PHD-bromodomain of TIF1, TRIM28/TIF1B and

Nanjing BYabscience technology Co.,Ltd



p300/CBP. Binds to DP1. Also interacts with CDK4.,

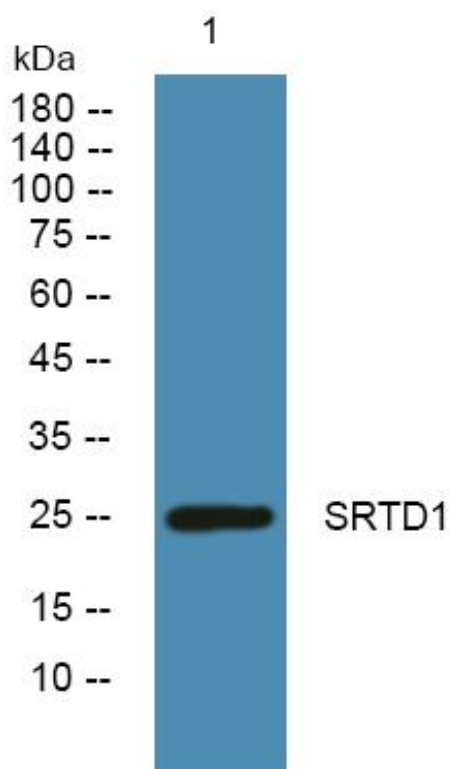
matters needing attention

Avoid repeated freezing and thawing!

Usage suggestions

This product can be used in immunological reaction related experiments. For more information, please consult technical personnel.

Products Images



Western Blot analysis of various cells using SRTD1 Monoclonal Antibody