

# HLAG Monoclonal Antibody

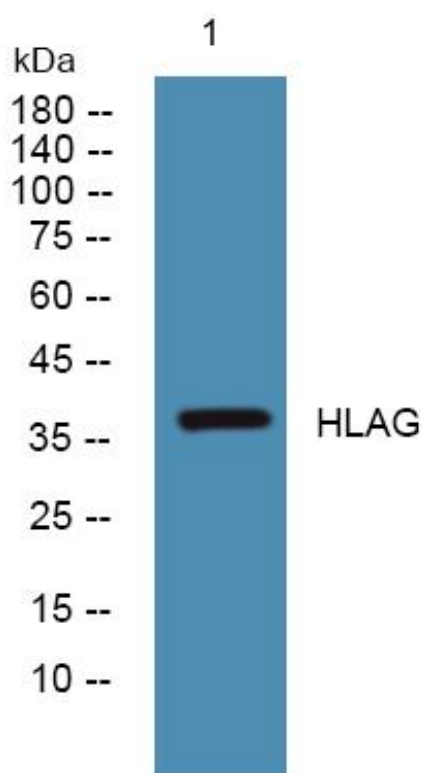
Catalog No	BYmab-07744
Isotype	IgG
Reactivity	Human
Applications	WB
Gene Name	HLA-G HLA-6.0 HLAG
Protein Name	HLA class I histocompatibility antigen, alpha chain G (HLA G antigen) (MHC class I antigen G)
Immunogen	Synthesized peptide derived from part region of human protein
Specificity	HLAG Monoclonal Antibody detects endogenous levels of protein.
Formulation	Liquid in PBS containing 50% glycerol, and 0.02% sodium azide.
Source	Monoclonal, Mouse,IgG
Purification	The antibody was affinity-purified from mouse antiserum by affinity-chromatography using epitope-specific immunogen.
Dilution	WB 1:500-2000
Concentration	1 mg/ml
Purity	≥90%
Storage Stability	-20°C/1 year
Synonyms	
Observed Band	37kD
Cell Pathway	[Isoform 1]: Cell membrane ; Single-pass type I membrane protein . Endoplasmic reticulum membrane . Early endosome membrane . ; [Soluble HLA class I histocompatibility antigen, alpha chain G]: Secreted . ; [Isoform 2]: Cell membrane ; Single-pass type I membrane protein . ; [Isoform 3]: Cell membrane ; Single-pass type I membrane protein . ; [Isoform 4]: Cell membrane ; Single-pass type I membrane protein . ; [Isoform 5]: Secreted . Early endosome . ; [Isoform 6]: Secreted . ; [Isoform 7]: Secreted . ; Cell projection, filopodium membrane . HLA-G trogocytosis from extravillous trophoblast's filopodia occurs in the majority of decidual NK cells. .
Tissue Specificity	Expressed in adult eye (PubMed:1570318). Expressed in immune cell subsets including monocytes, myeloid and plasmacytoid dendritic cells and regulatory T cells (Tr1)(at protein level) (PubMed:20448110). Secreted by follicular dendritic cell and follicular helper T cells (PubMed:24453251). Isoform 5: Detected in physiological fluids including amniotic fluid and serum (PubMed:11137219). Isoform 7: Expressed in placenta, amniotic membrane, skin cord blood and peripheral blood mononuclear cells (PubMed:11137219).

Nanjing BYabscience technology Co.,Ltd



<b>Function</b>	function:Involved in the presentation of foreign antigens to the immune system.,similarity:Belongs to the MHC class I family.,similarity:Contains 1 Ig-like C1-type (immunoglobulin-like) domain.,subunit:Heterodimer of an alpha chain and a beta chain (beta-2-microglobulin).,tissue specificity:Expression of HLAG seems to be restricted to eye cells and tissue.,
<b>Background</b>	HLA-G belongs to the HLA class I heavy chain paralogues. This class I molecule is a heterodimer consisting of a heavy chain and a light chain (beta-2 microglobulin). The heavy chain is anchored in the membrane. HLA-G is expressed on fetal derived placental cells. The heavy chain is approximately 45 kDa and its gene contains 8 exons. Exon one encodes the leader peptide, exons 2 and 3 encode the alpha1 and alpha2 domain, which both bind the peptide, exon 4 encodes the alpha3 domain, exon 5 encodes the transmembrane region, and exon 6 encodes the cytoplasmic tail. [provided by RefSeq, Jul 2008],
<b>matters needing attention</b>	Avoid repeated freezing and thawing!
<b>Usage suggestions</b>	This product can be used in immunological reaction related experiments. For more information, please consult technical personnel.

## Products Images



Nanjing BYabscience technology Co.,Ltd

网址: [www.njbybio.com](http://www.njbybio.com)

官方热线: 025-5229-8998

监督电话: 15950492658