



GDF1 Monoclonal Antibody

Catalog No	BYmab-07743
Isotype	IgG
Reactivity	Human;Rat;Mouse;
Applications	WB
Gene Name	GDF1
Protein Name	Embryonic growth/differentiation factor 1 (GDF-1)
Immunogen	Synthesized peptide derived from part region of human protein AA range: 321-370
Specificity	GDF1 Monoclonal Antibody detects endogenous levels of protein.
Formulation	Liquid in PBS containing 50% glycerol, and 0.02% sodium azide.
Source	Monoclonal, Mouse,IgG
Purification	The antibody was affinity-purified from mouse antiserum by affinity-chromatography using epitope-specific immunogen.
Dilution	WB 1:500-2000
Concentration	1 mg/ml
Purity	≥90%
Storage Stability	-20°C/1 year
Synonyms	
Observed Band	40kD
Cell Pathway	Secreted.
Tissue Specificity	Expressed in the brain.
Function	function:May be either a bona fide (dihydro)ceramide synthase or a modulator of its activity. When overexpressed in cells is involved in the production of sphingolipids containing mainly one fatty acid donor (N-linked stearyl- (C18) ceramide) in a fumonisin B1-independent manner.,function:May mediate cell differentiation events during embryonic development.,miscellaneous:This protein is produced by a bicistronic gene which also produces the GDF1 protein from a non-overlapping reading frame.,miscellaneous:This protein is produced by a bicistronic gene which also produces the LASS1 protein from a non-overlapping reading frame.,similarity:Belongs to the TGF-beta family.,similarity:Contains 1 TLC (TRAM/LAG1/CLN8) domain.,subcellular location:Isoform 1 may recycle from the Golgi to the endoplasmic reticulum.,subunit:Homodimer;

Nanjing BYabscience technology Co.,Ltd



disulfide-linked.,tissue specificity:Expressed in the brain.,

Background

This gene encodes a secreted ligand of the TGF-beta (transforming growth factor-beta) superfamily of proteins. Ligands of this family bind various TGF-beta receptors leading to recruitment and activation of SMAD family transcription factors that regulate gene expression. The encoded preproprotein is proteolytically processed to generate each subunit of the disulfide-linked homodimer. Studies in rodents suggest that this protein is involved in the establishment of left-right asymmetry in early embryogenesis and in neural development in later embryogenesis. The encoded protein is translated from a bicistronic mRNA that also encodes ceramide synthase 1. Mutations in this gene are associated with several congenital cardiovascular malformations. [provided by RefSeq, Jul 2016],

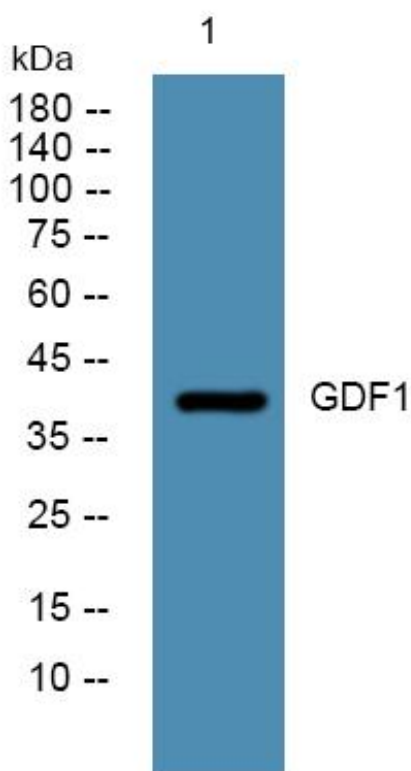
matters needing attention

Avoid repeated freezing and thawing!

Usage suggestions

This product can be used in immunological reaction related experiments. For more information, please consult technical personnel.

Products Images



Western Blot analysis of various cells using GDF1 Monoclonal Antibody

Nanjing BYabscience technology Co.,Ltd

网址: www.njbybio.com

官方热线: 025-5229-8998

监督电话: 15950492658