



ANFC Monoclonal Antibody

Catalog No	BYmab-07714
Isotype	IgG
Reactivity	Human;Mouse;Rat
Applications	WB
Gene Name	NPPC CNP2
Protein Name	C-type natriuretic peptide [Cleaved into: CNP-22; CNP-29; CNP-53]
Immunogen	Synthesized peptide derived from part region of human protein
Specificity	ANFC Monoclonal Antibody detects endogenous levels of protein.
Formulation	Liquid in PBS containing 50% glycerol, and 0.02% sodium azide.
Source	Monoclonal, Mouse,IgG
Purification	The antibody was affinity-purified from mouse antiserum by affinity-chromatography using epitope-specific immunogen.
Dilution	WB 1:500-2000
Concentration	1 mg/ml
Purity	≥90%
Storage Stability	-20°C/1 year
Synonyms	
Observed Band	13kD
Cell Pathway	Secreted.
Tissue Specificity	[CNP-22]: In the kidney, predominantly expressed in the distal tubular cells (at protein level).
Function	function:Vasorelaxant activity. Has a cGMP-stimulating activity.,similarity:Belongs to the natriuretic peptide family.,
Background	This gene encodes a preproprotein that is proteolytically processed to generate multiple protein products. These products include the cardiac natriuretic peptides CNP-53, CNP-29 and CNP-22, which belong to the natriuretic family of peptides. The encoded peptides exhibit vasorelaxation activity in laboratory animals and elevated levels of CNP-22 have been observed in the plasma of chronic heart failure patients. [provided by RefSeq, Oct 2015],
matters needing attention	Avoid repeated freezing and thawing!

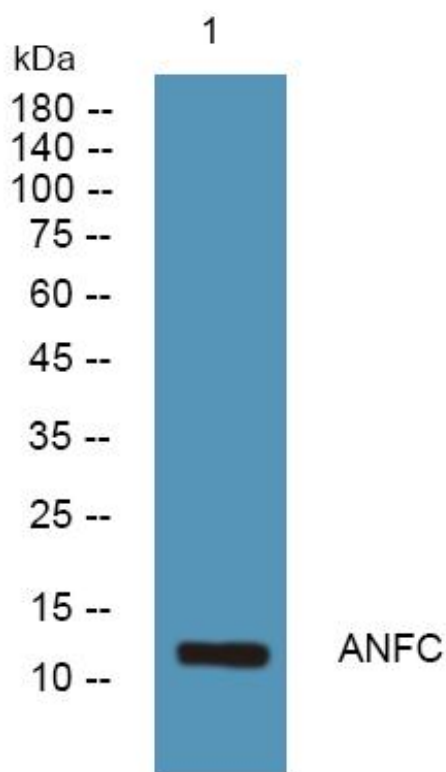
Nanjing BYabscience technology Co.,Ltd



Usage suggestions

This product can be used in immunological reaction related experiments. For more information, please consult technical personnel.

Products Images



Western Blot analysis of various cells using ANFC Monoclonal Antibody

Nanjing BYabscience technology Co.,Ltd

网址: www.njbybio.com

官方热线: 025-5229-8998

监督电话: 15950492658