



DEST Monoclonal Antibody

Catalog No	BYmab-07713
Isotype	IgG
Reactivity	Human;Mouse;Rat
Applications	WB
Gene Name	DSTN ACTDP DSN
Protein Name	Destrin (Actin-depolymerizing factor) (ADF)
Immunogen	Synthesized peptide derived from part region of human protein
Specificity	DEST Monoclonal Antibody detects endogenous levels of protein.
Formulation	Liquid in PBS containing 50% glycerol, and 0.02% sodium azide.
Source	Monoclonal, Mouse,IgG
Purification	The antibody was affinity-purified from mouse antiserum by affinity-chromatography using epitope-specific immunogen.
Dilution	WB 1:500-2000
Concentration	1 mg/ml
Purity	≥90%
Storage Stability	-20°C/1 year
Synonyms	
Observed Band	18kD
Cell Pathway	actin cytoskeleton,cortical actin cytoskeleton,extracellular exosome,
Tissue Specificity	Widely distributed in various tissues.
Function	function:Actin-depolymerizing protein. Severs actin filaments (F-actin) and binds to actin monomers (G-actin). Acts in a pH-independent manner.,similarity:Belongs to the actin-binding proteins ADF family.,similarity:Contains 1 ADF-H domain.,tissue specificity:Widely distributed in various tissues.,
Background	The product of this gene belongs to the actin-binding proteins ADF family. This family of proteins is responsible for enhancing the turnover rate of actin in vivo. This gene encodes the actin depolymerizing protein that severs actin filaments (F-actin) and binds to actin monomers (G-actin). Two transcript variants encoding distinct isoforms have been identified for this gene. [provided by RefSeq, Jul 2008],

Nanjing BYabscience technology Co.,Ltd



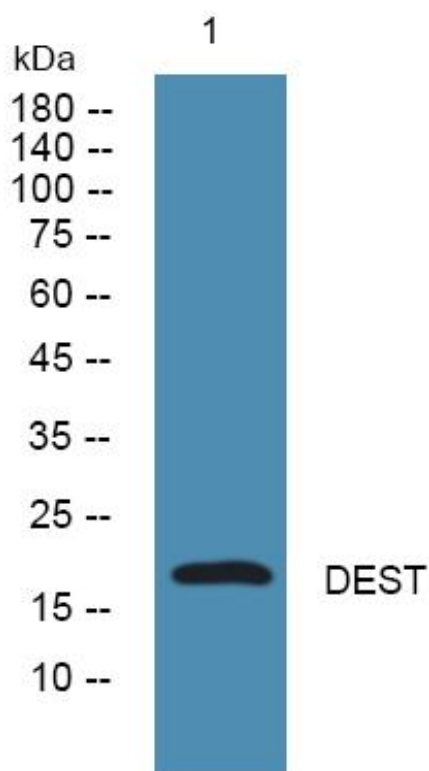
matters needing attention

Avoid repeated freezing and thawing!

Usage suggestions

This product can be used in immunological reaction related experiments. For more information, please consult technical personnel.

Products Images



Western Blot analysis of various cells using DEST Monoclonal Antibody