



# CD3G Monoclonal Antibody

<b>Catalog No</b>	BYmab-07692
<b>Isotype</b>	IgG
<b>Reactivity</b>	Human;Mouse;Rat
<b>Applications</b>	WB
<b>Gene Name</b>	CD3G T3G
<b>Protein Name</b>	T-cell surface glycoprotein CD3 gamma chain (T-cell receptor T3 gamma chain) (CD antigen CD3g)
<b>Immunogen</b>	Synthesized peptide derived from part region of human protein
<b>Specificity</b>	CD3G Monoclonal Antibody detects endogenous levels of protein.
<b>Formulation</b>	Liquid in PBS containing 50% glycerol, and 0.02% sodium azide.
<b>Source</b>	Monoclonal, Mouse,IgG
<b>Purification</b>	The antibody was affinity-purified from mouse antiserum by affinity-chromatography using epitope-specific immunogen.
<b>Dilution</b>	WB 1:500-2000
<b>Concentration</b>	1 mg/ml
<b>Purity</b>	≥90%
<b>Storage Stability</b>	-20°C/1 year
<b>Synonyms</b>	
<b>Observed Band</b>	20kD
<b>Cell Pathway</b>	Cell membrane ; Single-pass type I membrane protein.
<b>Tissue Specificity</b>	T-cell,Thymus,
<b>Function</b>	domain:A di-leucine motif and a tyrosine-based motif are individually sufficient to induce both endocytosis and delivery to lysosomes.,function:The CD3 complex mediates signal transduction.,online information:CD3 receptor entry,online information:CD3G mutation db,similarity:Contains 1 Ig-like (immunoglobulin-like) domain.,similarity:Contains 1 ITAM domain.,subunit:The TCR/CD3 complex of T-lymphocytes consists of either a TCR alpha/beta or TCR gamma/delta heterodimer coexpressed at the cell surface with the invariant subunits of CD3 labeled gamma, delta, epsilon, zeta, and eta.,
<b>Background</b>	The protein encoded by this gene is the CD3-gamma polypeptide, which together with CD3-epsilon, -delta and -zeta, and the T-cell receptor alpha/beta and gamma/delta heterodimers, forms the T-cell receptor-CD3 complex. This

**Nanjing BYabscience technology Co.,Ltd**



complex plays an important role in coupling antigen recognition to several intracellular signal-transduction pathways. The genes encoding the epsilon, gamma and delta polypeptides are located in the same cluster on chromosome 11. Defects in this gene are associated with T cell immunodeficiency. [provided by RefSeq, Jul 2008],

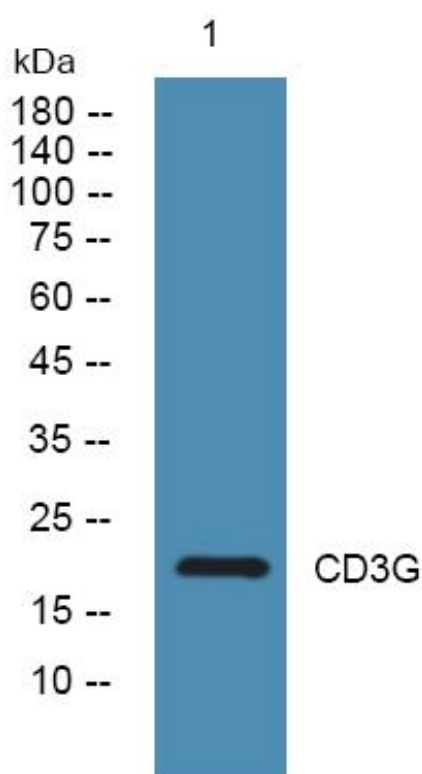
**matters needing attention**

Avoid repeated freezing and thawing!

**Usage suggestions**

This product can be used in immunological reaction related experiments. For more information, please consult technical personnel.

## Products Images



Western Blot analysis of various cells using CD3G Monoclonal Antibody