



WDFY1 Monoclonal Antibody

Catalog No	BYmab-07651
Isotype	IgG
Reactivity	Human;Rat;Mouse;
Applications	WB
Gene Name	WDFY1 KIAA1435 WDF1 ZFYVE17
Protein Name	WD repeat and FYVE domain-containing protein 1 (FENS-1) (Phosphoinositide-binding protein 1) (WD40- and FYVE domain-containing protein 1) (Zinc finger FYVE domain-containing protein 17)
Immunogen	Synthesized peptide derived from part region of human protein
Specificity	WDFY1 Monoclonal Antibody detects endogenous levels of protein.
Formulation	Liquid in PBS containing 50% glycerol, and 0.02% sodium azide.
Source	Monoclonal, Mouse,IgG
Purification	The antibody was affinity-purified from mouse antiserum by affinity-chromatography using epitope-specific immunogen.
Dilution	WB 1:500-2000
Concentration	1 mg/ml
Purity	≥90%
Storage Stability	-20°C/1 year
Synonyms	
Observed Band	45kD
Cell Pathway	Early endosome .
Tissue Specificity	Brain,Ovary,Skin,
Function	similarity:Contains 1 FYVE-type zinc finger.,similarity:Contains 7 WD repeats.,subunit:Binds PtdIns3P in vitro with high specificity over other phosphoinositides.,
Background	The protein encoded by this gene is a phosphatidylinositol 3-phosphate binding protein, which contains a FYVE zinc finger domain and multiple WD-40 repeat domains. When exogenously expressed, it localizes to early endosomes. Mutagenesis analysis demonstrates that this endosomal localization is mediated by the FYVE domain. [provided by RefSeq, Jan 2015],

Nanjing BYabscience technology Co.,Ltd



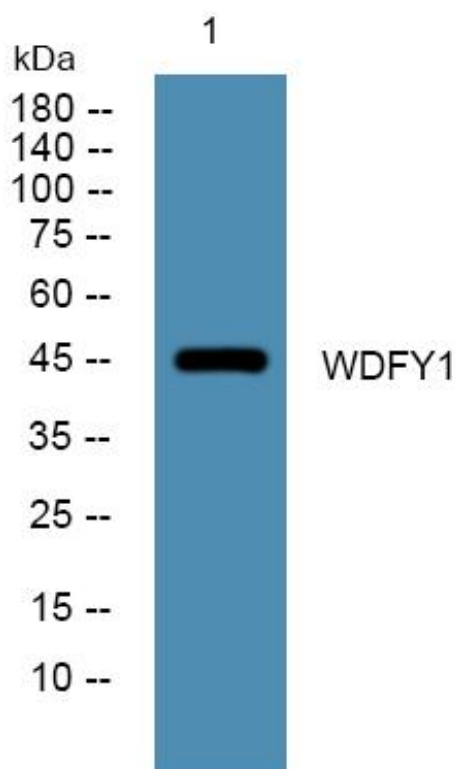
matters needing attention

Avoid repeated freezing and thawing!

Usage suggestions

This product can be used in immunological reaction related experiments. For more information, please consult technical personnel.

Products Images



Western Blot analysis of various cells using WDFY1 Monoclonal Antibody

Nanjing BYabs science technology Co.,Ltd

网址: www.njbybio.com

官方热线: 025-5229-8998

监督电话: 15950492658