



# NPY6R Monoclonal Antibody

Catalog No	BYmab-07643
Isotype	IgG
Reactivity	Human;Mouse
Applications	WB
Gene Name	NPY6R NPY1RL Y2B
Protein Name	Putative neuropeptide Y receptor type 6 (NPY6-R) (NPY Y1-like receptor) (Putative pancreatic polypeptide receptor 2) (PP2)
Immunogen	Synthesized peptide derived from human protein . at AA range: 190-270
Specificity	NPY6R Monoclonal Antibody detects endogenous levels of protein.
Formulation	Liquid in PBS containing 50% glycerol, and 0.02% sodium azide.
Source	Monoclonal, Mouse,IgG
Purification	The antibody was affinity-purified from mouse antiserum by affinity-chromatography using epitope-specific immunogen.
Dilution	WB 1:500-2000
Concentration	1 mg/ml
Purity	≥90%
Storage Stability	-20°C/1 year
Synonyms	
Observed Band	31kD
Cell Pathway	Membrane ; Multi-pass membrane protein .
Tissue Specificity	Expressed in heart, skeletal muscle, gastrointestinal tissues, spleen, brain and adrenal glands.
Function	caution:Could be the product of a pseudogene. According to PubMed:97066888, PubMed:97066971 and PubMed:9013614, the human NPY6R gene is an expressed pseudogene containing a premature stop codon and encoding a non-functional truncated protein missing the last transmembrane domain. A single base pair deletion relative to the mouse ortholog, results in a truncated protein lacking the seventh transmembrane domain.,function:When expressed, is unable to bind pancreatic polypeptide (PP), neuropeptide Y (NPY), or peptide YY (PYY), suggesting that either it is functionally inactive or that it may have acquired a pancreatic polypeptide-independent function.,similarity:Belongs to the G-protein coupled receptor 1 family.,tissue specificity:Expressed in heart, skeletal muscle, gastrointestinal tissues, spleen, brain and adrenal glands.,

**Nanjing BYabscience technology Co.,Ltd**



## Background

caution: Could be the product of a pseudogene. According to PubMed:97066888, PubMed:97066971 and PubMed:9013614, the human NPY6R gene is an expressed pseudogene containing a premature stop codon and encoding a non-functional truncated protein missing the last transmembrane domain. A single base pair deletion relative to the mouse ortholog, results in a truncated protein lacking the seventh transmembrane domain. function: When expressed, is unable to bind pancreatic polypeptide (PP), neuropeptide Y (NPY), or peptide YY (PYY), suggesting that either it is functionally inactive or that it may have acquired a pancreatic polypeptide-independent function. similarity: Belongs to the G-protein coupled receptor 1 family. tissue specificity: Expressed in heart, skeletal muscle, gastrointestinal tissues, spleen, brain and adrenal glands.

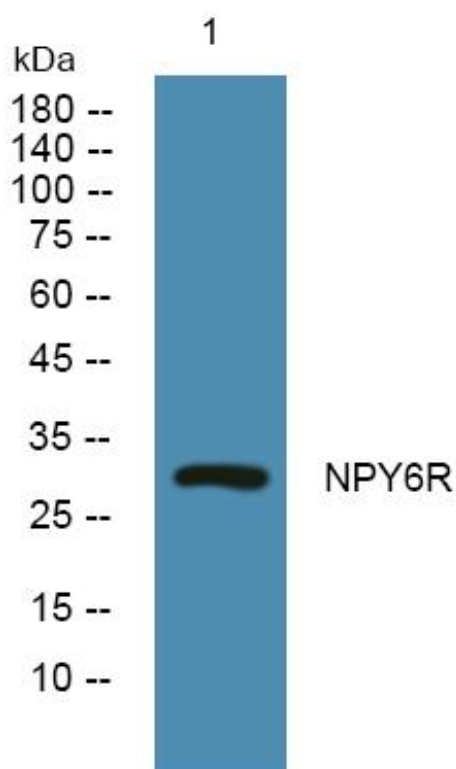
## matters needing attention

Avoid repeated freezing and thawing!

## Usage suggestions

This product can be used in immunological reaction related experiments. For more information, please consult technical personnel.

## Products Images



Western Blot analysis of various cells using NPY6R Monoclonal Antibody