



GPC39 Monoclonal Antibody

Catalog No	BYmab-07642
Isotype	IgG
Reactivity	Human;Rat;Mouse;
Applications	WB
Gene Name	
Protein Name	Putative G-protein coupled receptor GPCR39 (hGPCR39)
Immunogen	Synthesized peptide derived from human protein . at AA range: 120-200
Specificity	GPC39 Monoclonal Antibody detects endogenous levels of protein.
Formulation	Liquid in PBS containing 50% glycerol, and 0.02% sodium azide.
Source	Monoclonal, Mouse,IgG
Purification	The antibody was affinity-purified from mouse antiserum by affinity-chromatography using epitope-specific immunogen.
Dilution	WB 1:500-2000
Concentration	1 mg/ml
Purity	≥90%
Storage Stability	-20°C/1 year
Synonyms	
Observed Band	29kD
Cell Pathway	Cell membrane; Multi-pass membrane protein.
Tissue Specificity	
Function	
Background	GPR32P1 (G Protein-Coupled Receptor 32, Pseudogene 1) is a Pseudogene. GO annotations related to this gene include G-protein coupled receptor activity.
matters needing attention	Avoid repeated freezing and thawing!
Usage suggestions	This product can be used in immunological reaction related experiments. For more information, please consult technical personnel.

Nanjing BYabscience technology Co.,Ltd

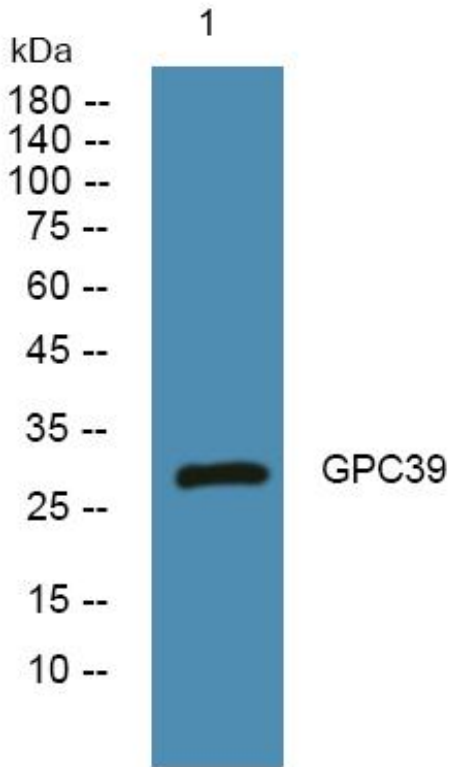
网址: www.njbybio.com

官方热线: 025-5229-8998

监督电话: 15950492658



Products Images



Western Blot analysis of various cells using GPC39
Monoclonal Antibody

Nanjing BYabs science technology Co.,Ltd

网址: www.njbybio.com

官方热线: 025-5229-8998

监督电话: 15950492658