



# T2R46 Monoclonal Antibody

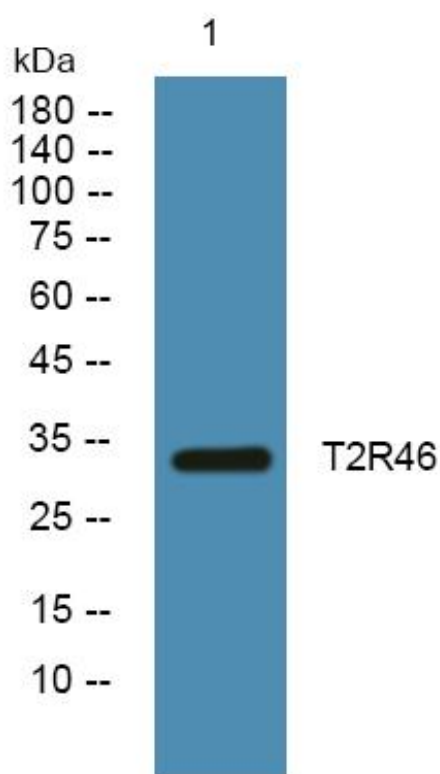
|                    |  |
|--------------------|--|
| Catalog No         | BYmab-07638  |
| Isotype            | IgG  |
| Reactivity         | Human;Rat;Mouse;   |
| Applications       | WB   |
| Gene Name          | TAS2R46  |
| Protein Name       | Taste receptor type 2 member 46 (T2R46) (Taste receptor type 2 member 54) (T2R54)  |
| Immunogen          | Synthesized peptide derived from human protein . at AA range: 160-240  |
| Specificity        | T2R46 Monoclonal Antibody detects endogenous levels of protein.  |
| Formulation        | Liquid in PBS containing 50% glycerol, and 0.02% sodium azide.   |
| Source             | Monoclonal, Mouse,IgG  |
| Purification       | The antibody was affinity-purified from mouse antiserum by affinity-chromatography using epitope-specific immunogen.   |
| Dilution           | WB 1:500-2000  |
| Concentration      | 1 mg/ml  |
| Purity             | ≥90%   |
| Storage Stability  | -20°C/1 year   |
| Synonyms           |  |
| Observed Band      | 33kD   |
| Cell Pathway       | Membrane ; Multi-pass membrane protein . Cell projection, cilium membrane . In airway epithelial cells, localizes to motile cilia.   |
| Tissue Specificity | Expressed in subsets of taste receptor cells of the tongue and exclusively in gustducin-positive cells. Expressed on ciliated airway epithelium.   |
| Function           | function:Receptor that may play a role in the perception of bitterness and is gustducin-linked. May play a role in sensing the chemical composition of the gastrointestinal content. The activity of this receptor may stimulate alpha gustducin, mediate PLC-beta-2 activation and lead to the gating of TRPM5.,miscellaneous:Most taste cells may be activated by a limited number of bitter compounds; individual taste cells can discriminate among bitter stimuli.,similarity:Belongs to the G-protein coupled receptor T2R family.,tissue specificity:Expressed in subsets of taste receptor cells of the tongue and exclusively in gustducin-positive cells., |

Nanjing BYabscience technology Co.,Ltd



|                                  |   |
|----------------------------------|---|
| <b>Background</b>                | TAS2R46 belongs to the large TAS2R receptor family. TAS2Rs are expressed on the surface of taste receptor cells and mediate the perception of bitterness through a G protein-coupled second messenger pathway (Conte et al., 2002 [PubMed 12584440]). For further information on TAS2Rs, see MIM 604791.[supplied by OMIM, Sep 2009], |
| <b>matters needing attention</b> | Avoid repeated freezing and thawing!  |
| <b>Usage suggestions</b>         | This product can be used in immunological reaction related experiments. For more information, please consult technical personnel.   |

## Products Images



Western Blot analysis of various cells using T2R46 Monoclonal Antibody