



# T2R31 Monoclonal Antibody

Catalog No	BYmab-07637
Isotype	IgG
Reactivity	Human;Rat;Mouse;
Applications	WB
Gene Name	TAS2R31 TAS2R44
Protein Name	Taste receptor type 2 member 31 (T2R31) (Taste receptor type 2 member 44) (T2R44) (Taste receptor type 2 member 53) (T2R53)
Immunogen	Synthesized peptide derived from human protein . at AA range: 10-90
Specificity	T2R31 Monoclonal Antibody detects endogenous levels of protein.
Formulation	Liquid in PBS containing 50% glycerol, and 0.02% sodium azide.
Source	Monoclonal, Mouse,IgG
Purification	The antibody was affinity-purified from mouse antiserum by affinity-chromatography using epitope-specific immunogen.
Dilution	WB 1:500-2000
Concentration	1 mg/ml
Purity	≥90%
Storage Stability	-20°C/1 year
Synonyms	
Observed Band	33kD
Cell Pathway	Membrane; Multi-pass membrane protein.
Tissue Specificity	Expressed in subsets of taste receptor cells of the tongue and exclusively in gustducin-positive cells.
Function	cell surface receptor linked signal transduction, G-protein coupled receptor protein signaling pathway, sensory perception, sensory perception of chemical stimulus, neurological system process, cognition, sensory perception of taste,
Background	TAS2R44 belongs to the large TAS2R receptor family. TAS2Rs are expressed on the surface of taste receptor cells and mediate the perception of bitterness through a G protein-coupled second messenger pathway (Conte et al., 2002 [PubMed 12584440]). For further information on TAS2Rs, see MIM 604791.[supplied by OMIM, Mar 2009],
matters needing attention	Avoid repeated freezing and thawing!

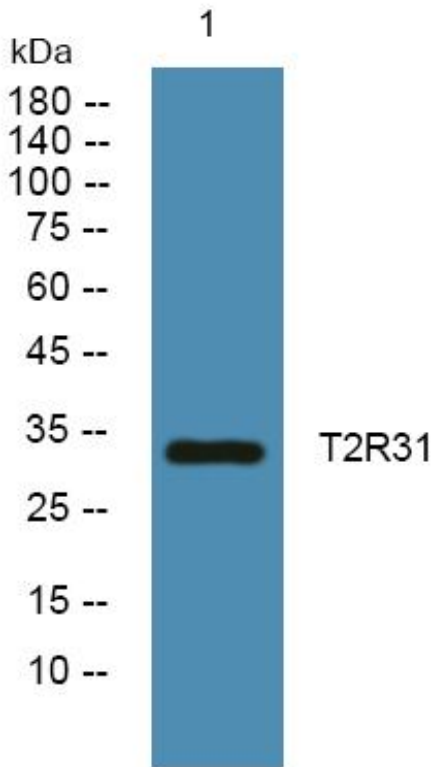
Nanjing BYabscience technology Co.,Ltd



### Usage suggestions

This product can be used in immunological reaction related experiments. For more information, please consult technical personnel.

## Products Images



Western Blot analysis of various cells using T2R31 Monoclonal Antibody

Nanjing BYabs science technology Co.,Ltd

网址: [www.njbybio.com](http://www.njbybio.com)

官方热线: 025-5229-8998

监督电话: 15950492658