



# TS1R2 Monoclonal Antibody

Catalog No	BYmab-07556
Isotype	IgG
Reactivity	Human;Rat;Mouse
Applications	WB
Gene Name	TAS1R2 GPR71 T1R2 TR2
Protein Name	Taste receptor type 1 member 2 (G-protein coupled receptor 71) (Sweet taste receptor T1R2)
Immunogen	Synthesized peptide derived from human protein . at AA range: 190-270
Specificity	TS1R2 Monoclonal Antibody detects endogenous levels of protein.
Formulation	Liquid in PBS containing 50% glycerol, and 0.02% sodium azide.
Source	Monoclonal, Mouse,IgG
Purification	The antibody was affinity-purified from mouse antiserum by affinity-chromatography using epitope-specific immunogen.
Dilution	WB 1:500-2000
Concentration	1 mg/ml
Purity	≥90%
Storage Stability	-20°C/1 year
Synonyms	
Observed Band	92kD
Cell Pathway	Cell membrane; Multi-pass membrane protein.
Tissue Specificity	
Function	function:Putative taste receptor. TAS1R2/TAS1R3 recognizes diverse natural and synthetic sweeteners.,online information:The taste experience -Issue 55 of February 2005,similarity:Belongs to the G-protein coupled receptor 3 family. TAS1R subfamily.,subunit:Forms heterodimers with TAS1R3.,
Background	function:Putative taste receptor. TAS1R2/TAS1R3 recognizes diverse natural and synthetic sweeteners.,online information:The taste experience -Issue 55 of February 2005,similarity:Belongs to the G-protein coupled receptor 3 family. TAS1R subfamily.,subunit:Forms heterodimers with TAS1R3.,
matters needing attention	Avoid repeated freezing and thawing!

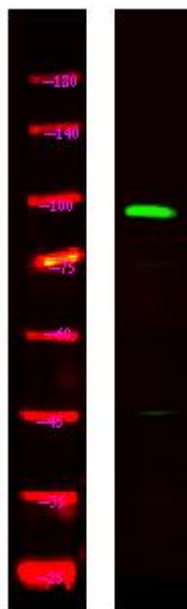
Nanjing BYabscience technology Co.,Ltd



### Usage suggestions

This product can be used in immunological reaction related experiments. For more information, please consult technical personnel.

## Products Images



Western Blot analysis of various cells using TS1R2 Monoclonal Antibody