



TM171 Monoclonal Antibody

Catalog No	BYmab-07553
Isotype	IgG
Reactivity	Human;Rat;Mouse
Applications	WB
Gene Name	TMEM171
Protein Name	Transmembrane protein 171
Immunogen	Synthesized peptide derived from human protein . at AA range: 140-220
Specificity	TM171 Monoclonal Antibody detects endogenous levels of protein.
Formulation	Liquid in PBS containing 50% glycerol, and 0.02% sodium azide.
Source	Monoclonal, Mouse,IgG
Purification	The antibody was affinity-purified from mouse antiserum by affinity-chromatography using epitope-specific immunogen.
Dilution	WB 1:500-2000
Concentration	1 mg/ml
Purity	≥90%
Storage Stability	-20°C/1 year
Synonyms	
Observed Band	35kD
Cell Pathway	Membrane ; Multi-pass membrane protein .
Tissue Specificity	Brain,Skin,
Function	
Background	TMEM171 (Transmembrane Protein 171) is a Protein Coding gene.
matters needing attention	Avoid repeated freezing and thawing!
Usage suggestions	This product can be used in immunological reaction related experiments. For more information, please consult technical personnel.

Nanjing BYabscience technology Co.,Ltd

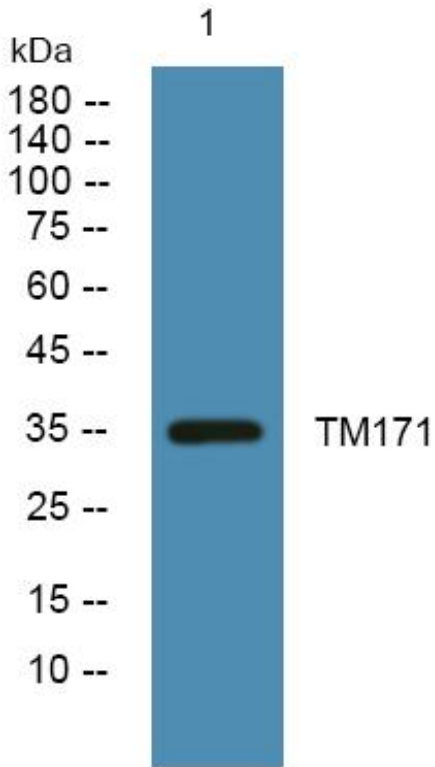
网址: www.njbybio.com

官方热线: 025-5229-8998

监督电话: 15950492658



Products Images



Western Blot analysis of various cells using TM171
Monoclonal Antibody