



TAAR1 Monoclonal Antibody

Catalog No	BYmab-07549
Isotype	IgG
Reactivity	Human;Mouse;Rat
Applications	WB
Gene Name	TAAR1 TA1 TAR1 TRAR1
Protein Name	Trace amine-associated receptor 1 (TaR-1) (Trace amine receptor 1)
Immunogen	Synthesized peptide derived from human protein . at AA range: 110-190
Specificity	TAAR1 Monoclonal Antibody detects endogenous levels of protein.
Formulation	Liquid in PBS containing 50% glycerol, and 0.02% sodium azide.
Source	Monoclonal, Mouse,IgG
Purification	The antibody was affinity-purified from mouse antiserum by affinity-chromatography using epitope-specific immunogen.
Dilution	WB 1:500-2000
Concentration	1 mg/ml
Purity	≥90%
Storage Stability	-20°C/1 year
Synonyms	
Observed Band	37kD
Cell Pathway	Cell membrane; Multi-pass membrane protein.
Tissue Specificity	Detected in low levels in discrete regions within the central nervous system and in several peripheral tissues. Moderately expressed in stomach. Low levels in amygdala, kidney, and lung, and small intestine. Trace amounts in cerebellum, dorsal root ganglia, hippocampus, hypothalamus, liver, medulla, pancreas, pituitary, pontine reticular formation, prostate, skeletal muscle and spleen.
Function	function:Receptor for trace amines, including beta-phenylethylamine (b-PEA), p-tyramine (p-TYR), octopamine and tryptamine, with highest affinity for b-PEA and p-TYR. Unresponsive to classical biogenic amines, such as epinephrine and histamine and only partially activated by dopamine and serotonin. Trace amines are biogenic amines present in very low levels in mammalian tissues. Although some trace amines have clearly defined roles as neurotransmitters in invertebrates, the extent to which they function as true neurotransmitters in vertebrates has remained speculative. Trace amines are likely to be involved in a variety of physiological functions that have yet to be fully understood. The signal

Nanjing BYabscience technology Co.,Ltd



transduced by this receptor is mediated by the G(s)-class of G-proteins which activate adenylate cyclase.,similarity:Belongs to the G-protein coupled receptor 1 family.,tissue specificity:Detecte

Background

The protein encoded by this gene is a G-protein coupled receptor activated by trace amines. The encoded protein responds little or not at all to dopamine, serotonin, epinephrine, or histamine, but responds well to beta-phenylethylamine, p-tyramine, octopamine, and tryptamine. While primarily functioning in neurologic systems, there is evidence that this gene is involved in blood cell and immunologic functions as well. This gene is thought to be intronless. [provided by RefSeq, Nov 2015],

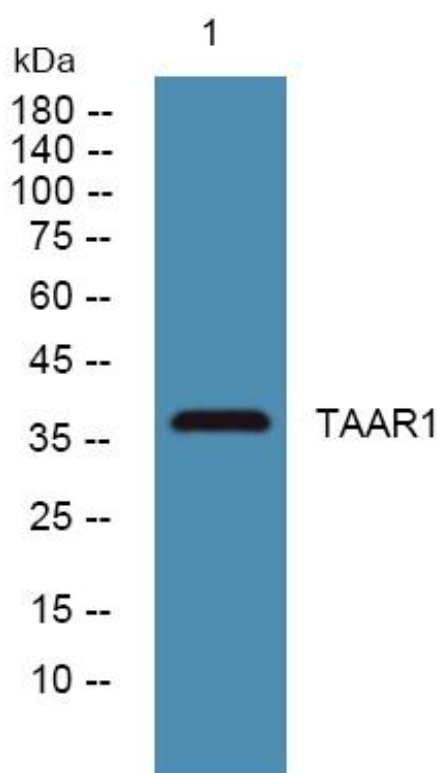
matters needing attention

Avoid repeated freezing and thawing!

Usage suggestions

This product can be used in immunological reaction related experiments. For more information, please consult technical personnel.

Products Images



Western Blot analysis of various cells using TAAR1 Monoclonal Antibody