



LPAR4 Monoclonal Antibody

Catalog No	BYmab-07531
Isotype	IgG
Reactivity	Human;Mouse
Applications	WB
Gene Name	LPAR4 GPR23 LPA4 P2RY9
Protein Name	Lysophosphatidic acid receptor 4 (LPA receptor 4) (LPA-4) (G-protein coupled receptor 23) (P2Y purinoceptor 9) (P2Y9) (P2Y5-like receptor) (Purinergic receptor 9)
Immunogen	Synthesized peptide derived from human protein . at AA range: 10-90
Specificity	LPAR4 Monoclonal Antibody detects endogenous levels of protein.
Formulation	Liquid in PBS containing 50% glycerol, and 0.02% sodium azide.
Source	Monoclonal, Mouse,IgG
Purification	The antibody was affinity-purified from mouse antiserum by affinity-chromatography using epitope-specific immunogen.
Dilution	WB 1:500-2000
Concentration	1 mg/ml
Purity	≥90%
Storage Stability	-20°C/1 year
Synonyms	
Observed Band	40kD
Cell Pathway	Cell membrane; Multi-pass membrane protein.
Tissue Specificity	High expression in ovary. Not detected in the brain regions thalamus, putamen, caudate, frontal cortex, pons, hypothalamus and hippocampus.
Function	function:Receptor for lysophosphatidic acid (LPA), a mediator of diverse cellular activities. Transduces a signal by increasing the intracellular calcium ions and by stimulating adenylyl cyclase activity. The rank order of potency for agonists of this receptor is 1-oleoyl- > 1-stearoyl- > 1-palmitoyl- > 1-myristoyl- > 1-alkyl- > 1-alkenyl-LPA.,similarity:Belongs to the G-protein coupled receptor 1 family.,tissue specificity:High expression in ovary. Not detected in the brain regions thalamus, putamen, caudate, frontal cortex, pons, hypothalamus and hippocampus.,
Background	lysophosphatidic acid receptor 4(LPAR4) Homo sapiens This gene encodes a member of the lysophosphatidic acid receptor family. It may also be related to the

Nanjing BYabscience technology Co.,Ltd



P2Y receptors, a family of receptors that bind purine and pyrimidine nucleotides and are coupled to G proteins. The encoded protein may play a role in monocytic differentiation. [provided by RefSeq, Feb 2009],

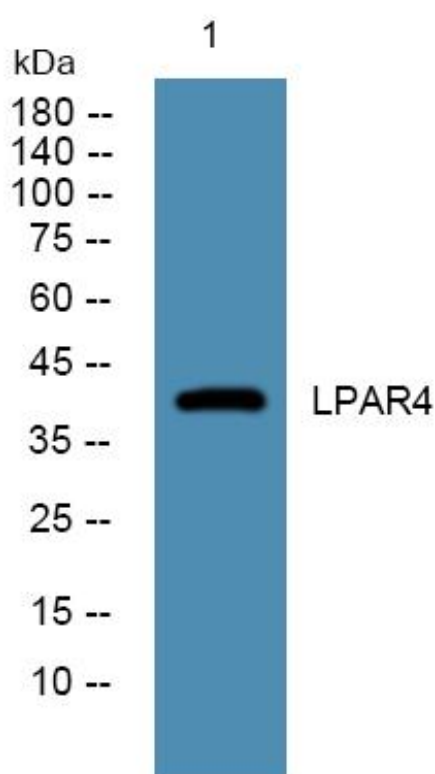
matters needing attention

Avoid repeated freezing and thawing!

Usage suggestions

This product can be used in immunological reaction related experiments. For more information, please consult technical personnel.

Products Images



Western Blot analysis of various cells using LPAR4 Monoclonal Antibody