



P2RY1 Monoclonal Antibody

Catalog No	BYmab-07527
Isotype	IgG
Reactivity	Human;Rat;Mouse
Applications	WB
Gene Name	P2RY1
Protein Name	P2Y purinoceptor 1 (P2Y1) (ATP receptor) (Purinergic receptor)
Immunogen	Synthesized peptide derived from human protein . at AA range: 130-210
Specificity	P2RY1 Monoclonal Antibody detects endogenous levels of protein.
Formulation	Liquid in PBS containing 50% glycerol, and 0.02% sodium azide.
Source	Monoclonal, Mouse,IgG
Purification	The antibody was affinity-purified from mouse antiserum by affinity-chromatography using epitope-specific immunogen.
Dilution	WB 1:500-2000
Concentration	1 mg/ml
Purity	≥90%
Storage Stability	-20°C/1 year
Synonyms	
Observed Band	41kD
Cell Pathway	Cell membrane ; Multi-pass membrane protein .
Tissue Specificity	Blood,Brain,Lung,Placenta,Platelet,
Function	function:Receptor for extracellular adenine nucleotides such as ATP and ADP. In platelets binding to ADP leads to mobilization of intracellular calcium ions via activation of phospholipase C, a change in platelet shape, and probably to platelet aggregation.,induction:Repressed by the P2Y1 receptor-specific antagonists A3P5PS, A3P5P and A2P5P. These inhibit calcium ion mobilization and shape change in platelets.,similarity:Belongs to the G-protein coupled receptor 1 family.,
Background	purinergic receptor P2Y1(P2RY1) Homo sapiens The product of this gene belongs to the family of G-protein coupled receptors. This family has several receptor subtypes with different pharmacological selectivity, which overlaps in some cases, for various adenosine and uridine nucleotides. This receptor functions as a receptor for extracellular ATP and ADP. In platelets binding to ADP

Nanjing BYabscience technology Co.,Ltd



leads to mobilization of intracellular calcium ions via activation of phospholipase C, a change in platelet shape, and probably to platelet aggregation. [provided by RefSeq, Jul 2008],

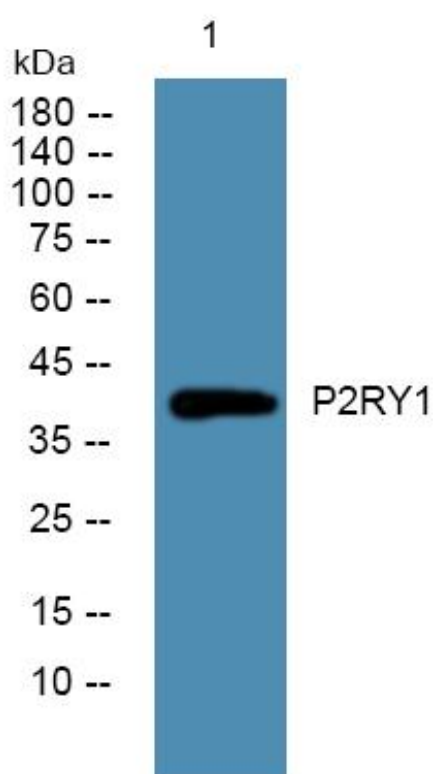
matters needing attention

Avoid repeated freezing and thawing!

Usage suggestions

This product can be used in immunological reaction related experiments. For more information, please consult technical personnel.

Products Images



Western Blot analysis of various cells using P2RY1 Monoclonal Antibody