



GRPR Monoclonal Antibody

Catalog No	BYmab-07411
Isotype	IgG
Reactivity	Human;Mouse;Rat
Applications	WB
Gene Name	GRPR
Protein Name	Gastrin-releasing peptide receptor (GRP-R) (GRP-preferring bombesin receptor)
Immunogen	Synthesized peptide derived from part region of human protein
Specificity	GRPR Monoclonal Antibody detects endogenous levels of protein.
Formulation	Liquid in PBS containing 50% glycerol, and 0.02% sodium azide.
Source	Monoclonal, Mouse,IgG
Purification	The antibody was affinity-purified from mouse antiserum by affinity-chromatography using epitope-specific immunogen.
Dilution	WB 1:500-2000
Concentration	1 mg/ml
Purity	≥90%
Storage Stability	-20°C/1 year
Synonyms	
Observed Band	42kD
Cell Pathway	Cell membrane ; Multi-pass membrane protein .
Tissue Specificity	Highly expressed in pancreas (PubMed:11245983). Also expressed in stomach, adrenal cortex and brain (PubMed:11245983). In brain, expressed in cells throughout the cortex (PubMed:34610277).
Function	function:Receptor for gastrin releasing peptide (GRP). This receptor mediates its action by association with G proteins that activate a phosphatidylinositol-calcium second messenger system.,similarity:Belongs to the G-protein coupled receptor 1 family.,tissue specificity:Highly expressed in pancreas. Also expressed in stomach, adrenal cortex and brain.,
Background	Gastrin-releasing peptide (GRP) regulates numerous functions of the gastrointestinal and central nervous systems, including release of gastrointestinal hormones, smooth muscle cell contraction, and epithelial cell proliferation and is a potent mitogen for neoplastic tissues. The effects of GRP are mediated through the gastrin-releasing peptide receptor. This receptor is a glycosylated,

Nanjing BYabscience technology Co.,Ltd



7-transmembrane G-protein coupled receptor that activates the phospholipase C signaling pathway. The receptor is aberrantly expressed in numerous cancers such as those of the lung, colon, and prostate. An individual with autism and multiple exostoses was found to have a balanced translocation between chromosome 8 and a chromosome X breakpoint located within the gastrin-releasing peptide receptor gene. [provided by RefSeq, Jul 2008],

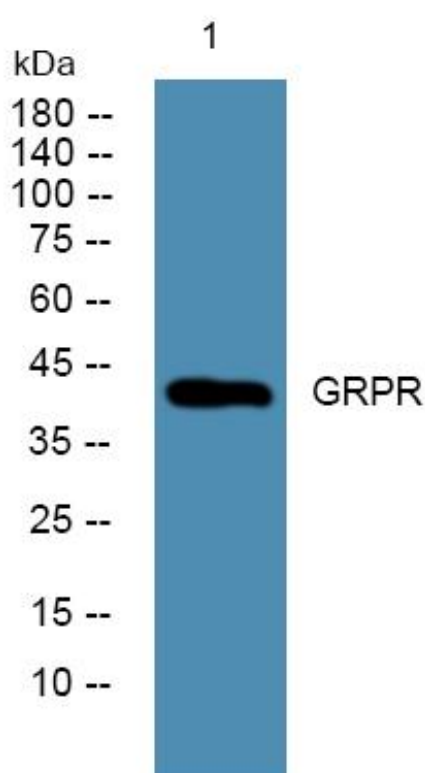
matters needing attention

Avoid repeated freezing and thawing!

Usage suggestions

This product can be used in immunological reaction related experiments. For more information, please consult technical personnel.

Products Images



Western Blot analysis of various cells using GRPR Monoclonal Antibody