



GPR88 Monoclonal Antibody

Catalog No	BYmab-07409
Isotype	IgG
Reactivity	Human;Mouse;Rat
Applications	WB
Gene Name	GPR88 STRG
Protein Name	Probable G-protein coupled receptor 88 (Striatum-specific G-protein coupled receptor)
Immunogen	Synthesized peptide derived from part region of human protein
Specificity	GPR88 Monoclonal Antibody detects endogenous levels of protein.
Formulation	Liquid in PBS containing 50% glycerol, and 0.02% sodium azide.
Source	Monoclonal, Mouse,IgG
Purification	The antibody was affinity-purified from mouse antiserum by affinity-chromatography using epitope-specific immunogen.
Dilution	WB 1:500-2000
Concentration	1 mg/ml
Purity	≥90%
Storage Stability	-20°C/1 year
Synonyms	
Observed Band	42kD
Cell Pathway	Cell membrane ; Multi-pass membrane protein . Cytoplasm . Nucleus . During cortical lamination, subcellular location shifts, on the day of birth, from expression at the plasma membrane and in the cytoplasm to the nuclei of neurons. This intranuclear localization remains throughout adulthood. .
Tissue Specificity	Expressed predominantly in the striatum.
Function	function:Orphan receptor.,similarity:Belongs to the G-protein coupled receptor 1 family.,tissue specificity:Expressed almost exclusively in striatum.,
Background	function:Orphan receptor.,similarity:Belongs to the G-protein coupled receptor 1 family.,tissue specificity:Expressed almost exclusively in striatum.,
matters needing attention	Avoid repeated freezing and thawing!

Nanjing BYabscience technology Co.,Ltd

网址: www.njbybio.com

官方热线: 025-5229-8998

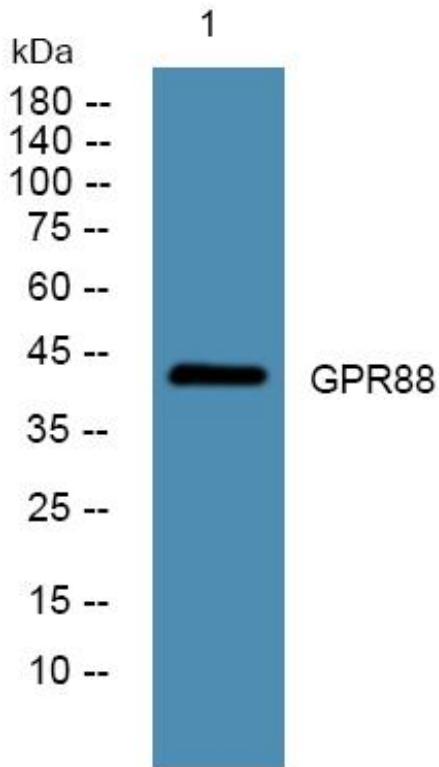
监督电话: 15950492658



Usage suggestions

This product can be used in immunological reaction related experiments. For more information, please consult technical personnel.

Products Images



Western Blot analysis of various cells using GPR88 Monoclonal Antibody

Nanjing BYabs science technology Co.,Ltd

网址: www.njbybio.com

官方热线: 025-5229-8998

监督电话: 15950492658