



GP182 Monoclonal Antibody

Catalog No	BYmab-07397
Isotype	IgG
Reactivity	Human;Rat;Mouse;
Applications	WB
Gene Name	GPR182 ADMR
Protein Name	G-protein coupled receptor 182
Immunogen	Synthesized peptide derived from human protein . at AA range: 190-270
Specificity	GP182 Monoclonal Antibody detects endogenous levels of protein.
Formulation	Liquid in PBS containing 50% glycerol, and 0.02% sodium azide.
Source	Monoclonal, Mouse,IgG
Purification	The antibody was affinity-purified from mouse antiserum by affinity-chromatography using epitope-specific immunogen.
Dilution	WB 1:500-2000
Concentration	1 mg/ml
Purity	≥90%
Storage Stability	-20°C/1 year
Synonyms	
Observed Band	44kD
Cell Pathway	Cell membrane; Multi-pass membrane protein.
Tissue Specificity	Highly expressed in heart, skeletal muscle, immune system, adrenal gland and liver.
Function	caution:Was originally (PubMed:9367907) thought to be a receptor for adrenomedullin.,function:Orphan receptor.,similarity:Belongs to the G-protein coupled receptor 1 family.,tissue specificity:Highly expressed in heart, skeletal muscle, immune system, adrenal gland and liver.,
Background	Adrenomedullin is a potent vasodilator peptide that exerts major effects on cardiovascular function. This gene encodes a seven-transmembrane protein that belongs to the family 1 of G-protein coupled receptors. Studies of the rat counterpart suggest that the encoded protein may function as a receptor for adrenomedullin. [provided by RefSeq, Jul 2008],

Nanjing BYabscience technology Co.,Ltd

网址: www.njbybio.com

官方热线: 025-5229-8998

监督电话: 15950492658



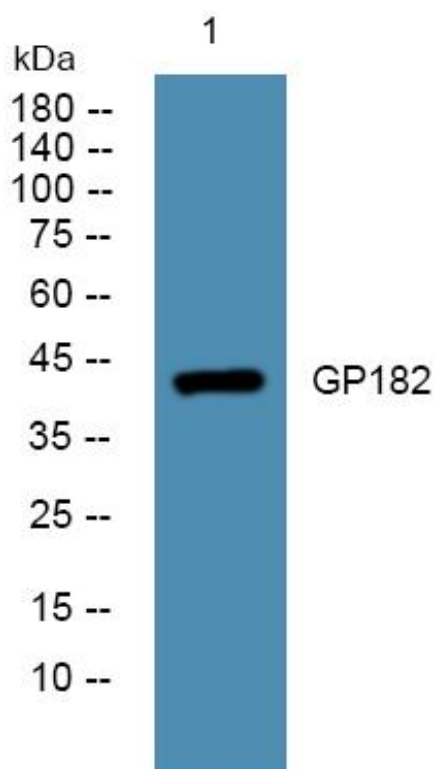
matters needing attention

Avoid repeated freezing and thawing!

Usage suggestions

This product can be used in immunological reaction related experiments. For more information, please consult technical personnel.

Products Images



Western Blot analysis of various cells using GP182 Monoclonal Antibody