



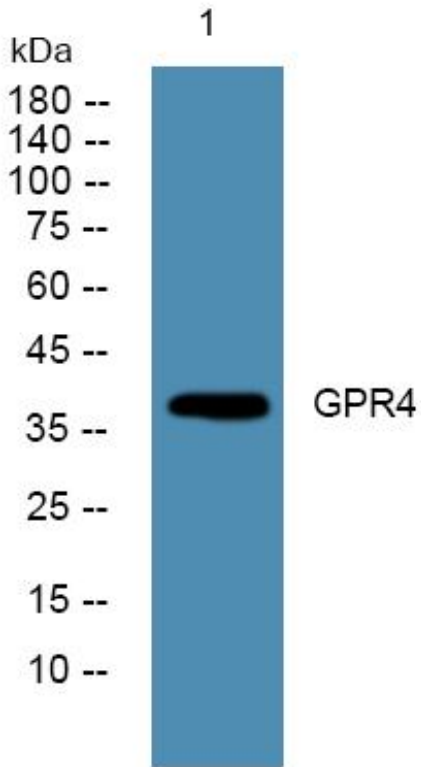
GPR4 Monoclonal Antibody

Catalog No	BYmab-07381
Isotype	IgG
Reactivity	Human;Mouse;Rat
Applications	WB
Gene Name	GPR4 GPR19
Protein Name	G-protein coupled receptor 4 (G-protein coupled receptor 19)
Immunogen	Synthesized peptide derived from human protein . at AA range: 160-240
Specificity	GPR4 Monoclonal Antibody detects endogenous levels of protein.
Formulation	Liquid in PBS containing 50% glycerol, and 0.02% sodium azide.
Source	Monoclonal, Mouse,IgG
Purification	The antibody was affinity-purified from mouse antiserum by affinity-chromatography using epitope-specific immunogen.
Dilution	WB 1:500-2000
Concentration	1 mg/ml
Purity	≥90%
Storage Stability	-20°C/1 year
Synonyms	
Observed Band	39kD
Cell Pathway	Cell membrane ; Multi-pass membrane protein .
Tissue Specificity	
Function	function:Orphan receptor.,similarity:Belongs to the G-protein coupled receptor 1 family.,
Background	function:Orphan receptor.,similarity:Belongs to the G-protein coupled receptor 1 family.,
matters needing attention	Avoid repeated freezing and thawing!
Usage suggestions	This product can be used in immunological reaction related experiments. For more information, please consult technical personnel.

Nanjing BYabscience technology Co.,Ltd



Products Images



Western Blot analysis of various cells using GPR4
Monoclonal Antibody