



# GPR21 Monoclonal Antibody

Catalog No	BYmab-07376
Isotype	IgG
Reactivity	Human;Mouse
Applications	WB
Gene Name	GPR21
Protein Name	Probable G-protein coupled receptor 21
Immunogen	Synthesized peptide derived from human protein . at AA range: 170-250
Specificity	GPR21 Monoclonal Antibody detects endogenous levels of protein.
Formulation	Liquid in PBS containing 50% glycerol, and 0.02% sodium azide.
Source	Monoclonal, Mouse,IgG
Purification	The antibody was affinity-purified from mouse antiserum by affinity-chromatography using epitope-specific immunogen.
Dilution	WB 1:500-2000
Concentration	1 mg/ml
Purity	≥90%
Storage Stability	-20°C/1 year
Synonyms	
Observed Band	38kD
Cell Pathway	Cell membrane; Multi-pass membrane protein.
Tissue Specificity	Not detected in the brain regions thalamus, putamen, caudate, frontal cortex, pons, hypothalamus, hippocampus.
Function	function:Orphan receptor.,similarity:Belongs to the G-protein coupled receptor 1 family.,tissue specificity:Not detected in the brain regions thalamus, putamen, caudate, frontal cortex, pons, hypothalamus, hippocampus.,
Background	This gene encodes a member of the G-protein-coupled receptor 1 family. G-protein coupled receptors are membrane proteins which activate signaling cascades as a response to extracellular stress. The encoded protein activates a Gq signal transduction pathway which mobilizes calcium. [provided by RefSeq, Nov 2012],
matters needing attention	Avoid repeated freezing and thawing!

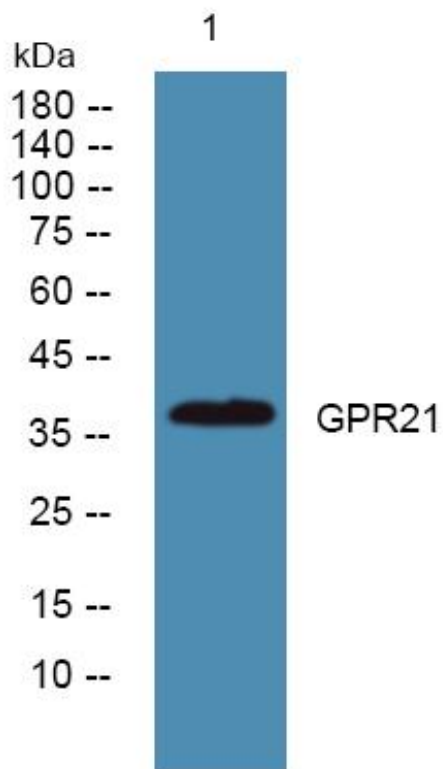
Nanjing BYabscience technology Co.,Ltd



### Usage suggestions

This product can be used in immunological reaction related experiments. For more information, please consult technical personnel.

## Products Images



Western Blot analysis of various cells using GPR21 Monoclonal Antibody