



# CS012 Monoclonal Antibody

Catalog No	BYmab-07356
Isotype	IgG
Reactivity	Human;Rat;Mouse;
Applications	WB
Gene Name	C19orf12
Protein Name	Protein C19orf12
Immunogen	Synthesized peptide derived from human protein . at AA range: 103-152
Specificity	CS012 Monoclonal Antibody detects endogenous levels of protein.
Formulation	Liquid in PBS containing 50% glycerol, and 0.02% sodium azide.
Source	Monoclonal, Mouse,IgG
Purification	The antibody was affinity-purified from mouse antiserum by affinity-chromatography using epitope-specific immunogen.
Dilution	WB 1:500-2000
Concentration	1 mg/ml
Purity	≥90%
Storage Stability	-20°C/1 year
Synonyms	
Observed Band	16kD
Cell Pathway	Mitochondrion . Mitochondrion membrane ; Single-pass membrane protein . Endoplasmic reticulum . Cytoplasm, cytosol . In response to oxidative stress, relocates to the cytosol forming aggregates that partially co-localize with mitochondria. .
Tissue Specificity	Brain,Lymph,Melanoma,Ovary,Stomach,
Function	
Background	This gene encodes a small transmembrane protein. Mutations in this gene are a cause of neurodegeneration with brain iron accumulation-4 (NBIA4), but the specific function of the encoded protein is unknown. Alternatively spliced transcript variants encoding multiple isoforms have been observed for this gene. [provided by RefSeq, Dec 2011],

Nanjing BYabscience technology Co.,Ltd



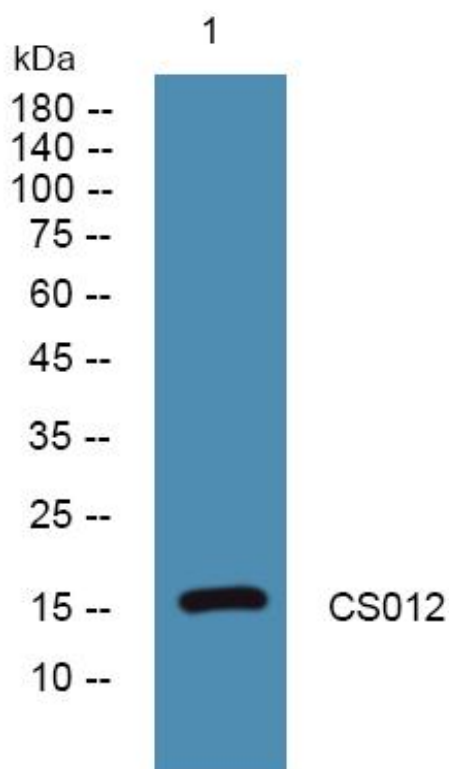
**matters needing attention**

Avoid repeated freezing and thawing!

**Usage suggestions**

This product can be used in immunological reaction related experiments. For more information, please consult technical personnel.

## Products Images



Western Blot analysis of various cells using CS012 Monoclonal Antibody