



NIPA1 Monoclonal Antibody

| | |
|--------------------|--|
| Catalog No | BYmab-07350 |
| Isotype | IgG |
| Reactivity | Human;Mouse |
| Applications | WB |
| Gene Name | NIPA1 SPG6 |
| Protein Name | Magnesium transporter NIPA1 (Non-imprinted in Prader-Willi/Angelman syndrome region protein 1) (Spastic paraplegia 6 protein) |
| Immunogen | Synthesized peptide derived from human protein . at AA range: 111-160 |
| Specificity | NIPA1 Monoclonal Antibody detects endogenous levels of protein. |
| Formulation | Liquid in PBS containing 50% glycerol, and 0.02% sodium azide. |
| Source | Monoclonal, Mouse,IgG |
| Purification | The antibody was affinity-purified from mouse antiserum by affinity-chromatography using epitope-specific immunogen. |
| Dilution | WB 1:500-2000 |
| Concentration | 1 mg/ml |
| Purity | ≥90% |
| Storage Stability | -20°C/1 year |
| Synonyms | |
| Observed Band | 36kD |
| Cell Pathway | Cell membrane ; Multi-pass membrane protein . Early endosome . Recruited to the cell membrane in response to low extracellular magnesium. . |
| Tissue Specificity | Widely expressed with highest levels in neuronal tissues. |
| Function | disease:Defects in NIPA1 are the cause of spastic paraplegia autosomal dominant type 6 (SPG6) [MIM:600363]. Spastic paraplegia is a degenerative spinal cord disorder characterized by a slow, gradual, progressive weakness and spasticity of the lower limbs.,sequence caution:Contaminating sequence. Sequence of unknown origin in the N-terminal part.,similarity:Belongs to the NIPA family.,tissue specificity:Widely expressed with highest levels in neuronal tissues., |
| Background | This gene encodes a magnesium transporter that associates with early endosomes and the cell surface in a variety of neuronal and epithelial cells. This protein may play a role in nervous system development and maintenance. Multiple transcript variants encoding different isoforms have been found for this gene. Mutations in this gene have been associated with autosomal dominant |

Nanjing BYabscience technology Co.,Ltd



spastic paraplegia 6. [provided by RefSeq, Nov 2008],

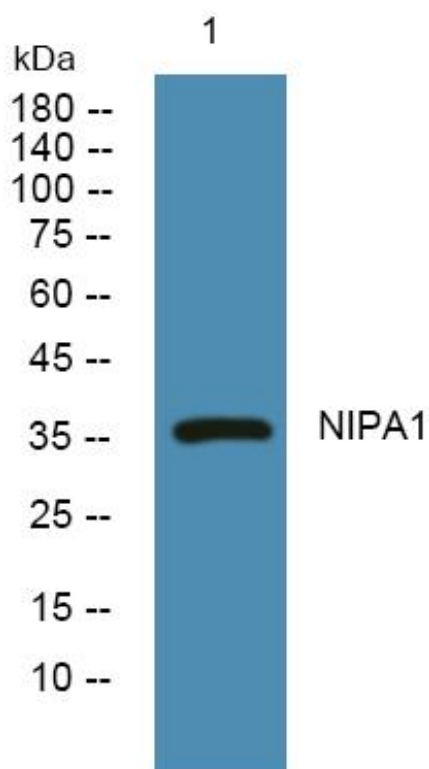
matters needing attention

Avoid repeated freezing and thawing!

Usage suggestions

This product can be used in immunological reaction related experiments. For more information, please consult technical personnel.

Products Images



Western Blot analysis of various cells using NIPA1 Monoclonal Antibody

Nanjing BYabs science technology Co.,Ltd

网址: www.njbybio.com

官方热线: 025-5229-8998

监督电话: 15950492658