



DRAM1 Monoclonal Antibody

Catalog No	BYmab-07344
Isotype	IgG
Reactivity	Human;Rat;Mouse;
Applications	WB
Gene Name	DRAM1 DRAM
Protein Name	DNA damage-regulated autophagy modulator protein 1 (Damage-regulated autophagy modulator)
Immunogen	Synthesized peptide derived from human protein . at AA range: 151-200
Specificity	DRAM1 Monoclonal Antibody detects endogenous levels of protein.
Formulation	Liquid in PBS containing 50% glycerol, and 0.02% sodium azide.
Source	Monoclonal, Mouse,IgG
Purification	The antibody was affinity-purified from mouse antiserum by affinity-chromatography using epitope-specific immunogen.
Dilution	WB 1:500-2000
Concentration	1 mg/ml
Purity	≥90%
Storage Stability	-20°C/1 year
Synonyms	
Observed Band	26kD
Cell Pathway	Lysosome membrane ; Multi-pass membrane protein .
Tissue Specificity	
Function	autophagy, apoptosis, cell death, programmed cell death, death,
Background	This gene is regulated as part of the p53 tumor suppressor pathway. The gene encodes a lysosomal membrane protein that is required for the induction of autophagy by the pathway. Decreased transcriptional expression of this gene is associated with various tumors. This gene has a pseudogene on chromosome 4. [provided by RefSeq, Jul 2008],
matters needing attention	Avoid repeated freezing and thawing!

Nanjing BYabscience technology Co.,Ltd

网址: www.njbybio.com

官方热线: 025-5229-8998

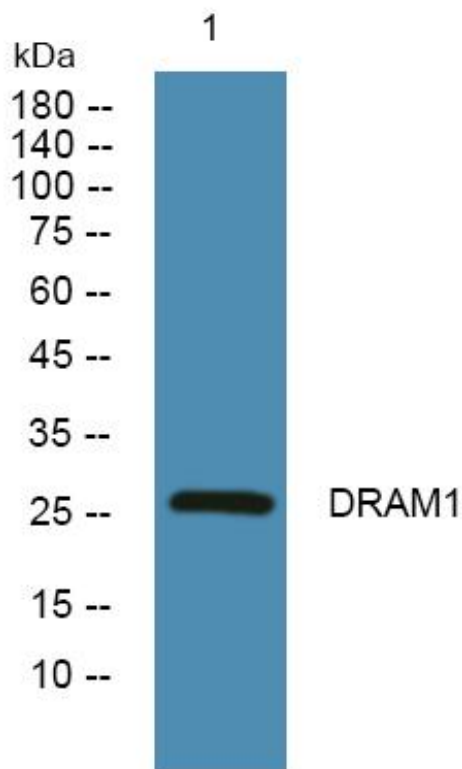
监督电话: 15950492658



Usage suggestions

This product can be used in immunological reaction related experiments. For more information, please consult technical personnel.

Products Images



Western Blot analysis of various cells using DRAM1 Monoclonal Antibody