



# RN135 Monoclonal Antibody

<b>Catalog No</b>	BYmab-07338
<b>Isotype</b>	IgG
<b>Reactivity</b>	Human;Rat;Mouse;
<b>Applications</b>	WB
<b>Gene Name</b>	RNF135 L13
<b>Protein Name</b>	E3 ubiquitin-protein ligase RNF135 (EC 6.3.2.-) (RIG-I E3 ubiquitin ligase) (REUL) (RING finger protein 135) (Riplet)
<b>Immunogen</b>	Synthesized peptide derived from human protein . at AA range: 81-130
<b>Specificity</b>	RN135 Monoclonal Antibody detects endogenous levels of protein.
<b>Formulation</b>	Liquid in PBS containing 50% glycerol, and 0.02% sodium azide.
<b>Source</b>	Monoclonal, Mouse,IgG
<b>Purification</b>	The antibody was affinity-purified from mouse antiserum by affinity-chromatography using epitope-specific immunogen.
<b>Dilution</b>	WB 1:500-2000
<b>Concentration</b>	1 mg/ml
<b>Purity</b>	≥90%
<b>Storage Stability</b>	-20°C/1 year
<b>Synonyms</b>	
<b>Observed Band</b>	47kD
<b>Cell Pathway</b>	Cytoplasm . Cytoplasm, Stress granule .
<b>Tissue Specificity</b>	Expressed in skeletal muscle, spleen, kidney, placenta, prostate, stomach, thyroid and tongue. Also weakly expressed in heart, thymus, liver and lung.
<b>Function</b>	disease:Defects in RNF135 are the cause of RNF135-related overgrowth syndrome. RNF135-related overgrowth syndrome is characterized by overgrowth, learning disability, dysmorphic features and variable additional features.,similarity:Contains 1 B30.2/SPRY domain.,similarity:Contains 1 RING-type zinc finger.,
<b>Background</b>	ring finger protein 135(RNF135) Homo sapiens The protein encoded by this gene contains a RING finger domain, a motif present in a variety of functionally distinct proteins and known to be involved in protein-protein and protein-DNA interactions. This gene is located in a chromosomal region known to be frequently deleted in patients with neurofibromatosis. Alternatively spliced transcript variants encoding distinct isoforms have been reported. [provided by RefSeq, Jul 2008],

**Nanjing BYabscience technology Co.,Ltd**



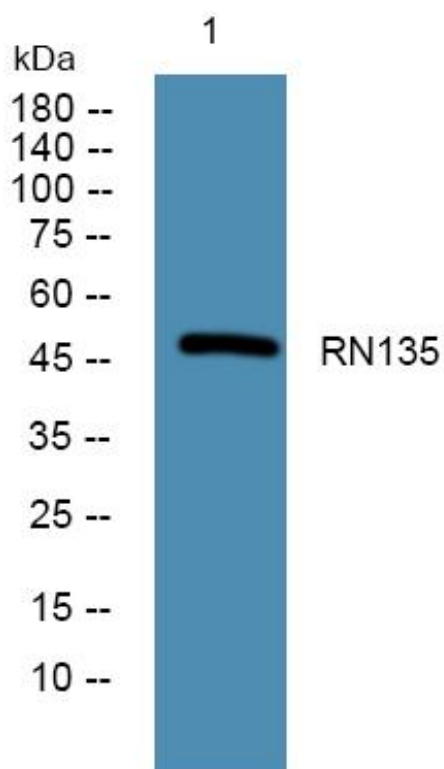
**matters needing attention**

Avoid repeated freezing and thawing!

**Usage suggestions**

This product can be used in immunological reaction related experiments. For more information, please consult technical personnel.

## Products Images



Western Blot analysis of various cells using RN135 Monoclonal Antibody