



# CISD2 Monoclonal Antibody

Catalog No	BYmab-07336
Isotype	IgG
Reactivity	Human;Mouse
Applications	WB
Gene Name	CISD2 CDGSH2 ERIS ZCD2
Protein Name	CDGSH iron-sulfur domain-containing protein 2 (Endoplasmic reticulum intermembrane small protein) (MitoNEET-related 1 protein) (Miner1) (Nutrient-deprivation autophagy factor-1) (NAF-1)
Immunogen	Synthesized peptide derived from human protein . at AA range: 31-80
Specificity	CISD2 Monoclonal Antibody detects endogenous levels of protein.
Formulation	Liquid in PBS containing 50% glycerol, and 0.02% sodium azide.
Source	Monoclonal, Mouse,IgG
Purification	The antibody was affinity-purified from mouse antiserum by affinity-chromatography using epitope-specific immunogen.
Dilution	WB 1:500-2000
Concentration	1 mg/ml
Purity	≥90%
Storage Stability	-20°C/1 year
Synonyms	
Observed Band	14kD
Cell Pathway	Endoplasmic reticulum membrane; Single-pass membrane protein. Mitochondrion outer membrane; Single-pass membrane protein. According to PubMed:20010695, it mainly localizes to the endoplasmic reticulum. However, experiments in mouse showed that it mainly localizes to the mitochondrion outer membrane.
Tissue Specificity	Testis, small intestine, kidney, lung, brain, heart, pancreas and platelets.
Function	caution:Although initially though (PubMed:17846994) to be a zinc-finger protein, it was later shown (PubMed:17376863) that it binds 1 2Fe-2S cluster instead.,cofactor:binds 1 2Fe-2S cluster.,disease:Defects in CISD2 are the cause of Wolfram syndrome 2 (WFS2) [MIM:604928]. WFS2 is a rare autosomal recessive disorder characterized by characterized by optic atrophy and diabetes mellitus. Other symptoms include the presence of profound upper gastrointestinal ulceration, significant bleeding tendency, defective platelet aggregation with

Nanjing BYabscience technology Co.,Ltd



collagen and various neurological symptoms.,function:May play a role in calcium homeostasis.,similarity:Belongs to the C1SD protein family.,tissue specificity:Testis, small intestine, kidney, lung, brain, heart, pancreas and platelets.,

#### Background

The protein encoded by this gene is a zinc finger protein that localizes to the endoplasmic reticulum. The encoded protein binds an iron/sulfur cluster and may be involved in calcium homeostasis. Defects in this gene are a cause of Wolfram syndrome 2. [provided by RefSeq, Mar 2011],

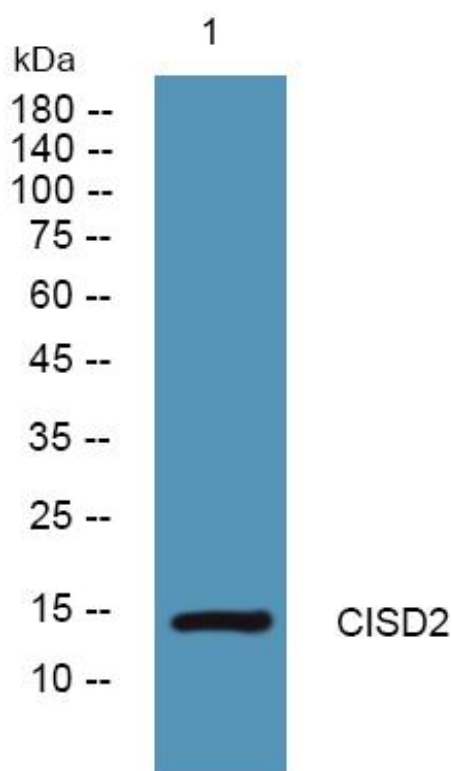
#### matters needing attention

Avoid repeated freezing and thawing!

#### Usage suggestions

This product can be used in immunological reaction related experiments. For more information, please consult technical personnel.

## Products Images



Western Blot analysis of various cells using C1SD2 Monoclonal Antibody