



# ID3 Monoclonal Antibody

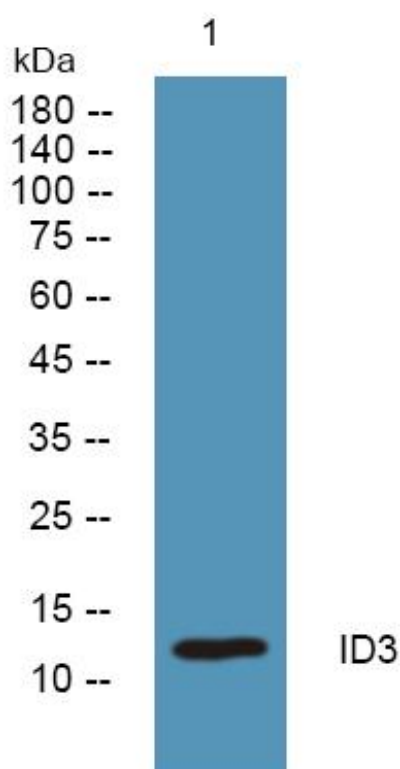
<b>Catalog No</b>	BYmab-07306
<b>Isotype</b>	IgG
<b>Reactivity</b>	Human;Mouse;Rat
<b>Applications</b>	WB
<b>Gene Name</b>	ID3 1R21 BHLHB25 HEIR1
<b>Protein Name</b>	DNA-binding protein inhibitor ID-3 (Class B basic helix-loop-helix protein 25) (bHLHb25) (Helix-loop-helix protein HEIR-1) (ID-like protein inhibitor HLH 1R21) (Inhibitor of DNA binding 3)
<b>Immunogen</b>	Synthesized peptide derived from human protein . at AA range: 68-117
<b>Specificity</b>	ID3 Monoclonal Antibody detects endogenous levels of protein.
<b>Formulation</b>	Liquid in PBS containing 50% glycerol, and 0.02% sodium azide.
<b>Source</b>	Monoclonal, Mouse,IgG
<b>Purification</b>	The antibody was affinity-purified from mouse antiserum by affinity-chromatography using epitope-specific immunogen.
<b>Dilution</b>	WB 1:500-2000
<b>Concentration</b>	1 mg/ml
<b>Purity</b>	≥90%
<b>Storage Stability</b>	-20°C/1 year
<b>Synonyms</b>	
<b>Observed Band</b>	13kD
<b>Cell Pathway</b>	Nucleus.
<b>Tissue Specificity</b>	Expressed abundantly in lung, kidney and adrenal gland, but not in adult brain.
<b>Function</b>	function:ID (inhibitor of DNA binding) HLH proteins lack a basic DNA-binding domain but are able to form heterodimers with other HLH proteins, thereby inhibiting DNA binding. ID-3 inhibits the binding of E2A-containing protein complexes to muscle creatine kinase E-box enhancer. May inhibit other transcription factors.,induction:By phorbol 12-myristate 13-acetate (PMA).,similarity:Contains 1 basic helix-loop-helix (bHLH) domain.,subunit:Interacts with COPS5 and COPS7A (By similarity). Homodimer, and heterodimer with other HLH proteins.,tissue specificity:Expressed abundantly in lung, kidney and adrenal gland, but not in adult brain.,

**Nanjing BYabscience technology Co.,Ltd**



<b>Background</b>	The protein encoded by this gene is a helix-loop-helix (HLH) protein that can form heterodimers with other HLH proteins. However, the encoded protein lacks a basic DNA-binding domain and therefore inhibits the DNA binding of any HLH protein with which it interacts. [provided by RefSeq, Aug 2011],
<b>matters needing attention</b>	Avoid repeated freezing and thawing!
<b>Usage suggestions</b>	This product can be used in immunological reaction related experiments. For more information, please consult technical personnel.

## Products Images



Western Blot analysis of various cells using ID3 Monoclonal Antibody