



# ES1 Monoclonal Antibody

Catalog No	BYmab-07300
Isotype	IgG
Reactivity	Human;Mouse;Rat
Applications	WB
Gene Name	C21orf33 HES1 KNPI
Protein Name	ES1 protein homolog, mitochondrial (Protein GT335) (Protein KNP-I)
Immunogen	Synthesized peptide derived from human protein . at AA range: 121-170
Specificity	ES1 Monoclonal Antibody detects endogenous levels of protein.
Formulation	Liquid in PBS containing 50% glycerol, and 0.02% sodium azide.
Source	Monoclonal, Mouse,IgG
Purification	The antibody was affinity-purified from mouse antiserum by affinity-chromatography using epitope-specific immunogen.
Dilution	WB 1:500-2000
Concentration	1 mg/ml
Purity	≥90%
Storage Stability	-20°C/1 year
Synonyms	
Observed Band	29kD
Cell Pathway	mitochondrion,
Tissue Specificity	Brain,Cajal-Retzius cell,Liver,Lung,
Function	similarity:Belongs to the ES1 family.,tissue specificity:Ubiquitous, but strongly expressed in heart and skeletal muscle.,
Background	This gene encodes a potential mitochondrial protein that is a member of the DJ-1/Pfpl gene family. This protein is overexpressed in fetal Down syndrome brain. Alternate splicing results in multiple transcript variants. [provided by RefSeq, May 2010],
matters needing attention	Avoid repeated freezing and thawing!

Nanjing BYabscience technology Co.,Ltd

网址: [www.njbybio.com](http://www.njbybio.com)

官方热线: 025-5229-8998

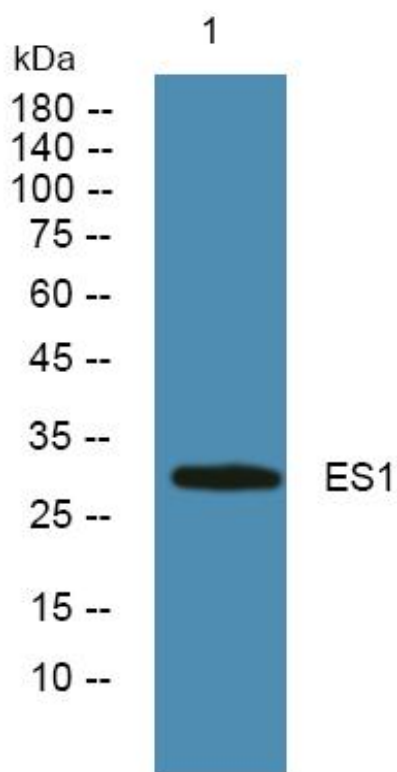
监督电话: 15950492658



### Usage suggestions

This product can be used in immunological reaction related experiments. For more information, please consult technical personnel.

## Products Images



Western Blot analysis of various cells using ES1 Monoclonal Antibody

Nanjing BYabs science technology Co.,Ltd

网址: [www.njbybio.com](http://www.njbybio.com)

官方热线: 025-5229-8998

监督电话: 15950492658