



SLUR1 Monoclonal Antibody

Catalog No	BYmab-07293
Isotype	IgG
Reactivity	Human;Rat;Mouse;
Applications	WB
Gene Name	SLURP1 ARS
Protein Name	Secreted Ly-6/uPAR-related protein 1 (SLURP-1) (ARS component B) (ARS(component B)-81/S) (Anti-neoplastic urinary protein) (ANUP)
Immunogen	Synthesized peptide derived from human protein . at AA range: 11-60
Specificity	SLUR1 Monoclonal Antibody detects endogenous levels of protein.
Formulation	Liquid in PBS containing 50% glycerol, and 0.02% sodium azide.
Source	Monoclonal, Mouse,IgG
Purification	The antibody was affinity-purified from mouse antiserum by affinity-chromatography using epitope-specific immunogen.
Dilution	WB 1:500-2000
Concentration	1 mg/ml
Purity	≥90%
Storage Stability	-20°C/1 year
Synonyms	
Observed Band	11kD
Cell Pathway	Secreted .
Tissue Specificity	Granulocytes. Expressed in skin. Predominantly expressed in the granular layer of skin, notably the acrosyringium. Identified in several biological fluids such as sweat, saliva, tears, plasma and urine.
Function	caution:It is not certain that ARS and ANUP are identical proteins.,disease:Defects in SLURP1 are a cause of Mal de Meleda (MDM) [MIM:248300]; also known as keratosis palmoplantaris transgradiens of Siemens. MDM is a rare autosomal recessive skin disorder, characterized by diffuse transgressive palmoplantar keratoderma with keratotic lesions extending onto the dorsa of the hands and the feet (transgrediens). Patients may have hyperhidrosis. Other features include perioral erythema, lichenoid plaques on the knees and the elbows, and nail abnormalities.,function:Has an antitumor activity. Was found to be a marker of late differentiation of the skin. Implicated in maintaining the physiological and structural integrity of the keratinocyte layers of the

Nanjing BYabscience technology Co.,Ltd



skin.,induction:Regulated by retinoic acid, epidermal growth factor and interferon-gamma.,similarity:Contains 1 UPAR/Ly6 domain.,subunit:Homo

Background

The protein encoded by this gene is a member of the Ly6/uPAR family but lacks a GPI-anchoring signal sequence. It is thought that this secreted protein contains antitumor activity. Mutations in this gene have been associated with Mal de Meleda, a rare autosomal recessive skin disorder. This gene maps to the same chromosomal region as several members of the Ly6/uPAR family of glycoprotein receptors. [provided by RefSeq, Jul 2008],

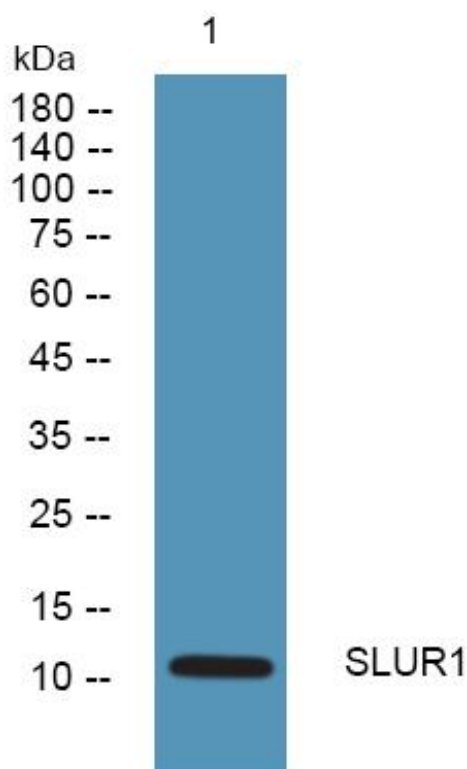
matters needing attention

Avoid repeated freezing and thawing!

Usage suggestions

This product can be used in immunological reaction related experiments. For more information, please consult technical personnel.

Products Images



Western Blot analysis of various cells using SLUR1 Monoclonal Antibody