



CHODL Monoclonal Antibody

| | |
|---------------------------|---|
| Catalog No | BYmab-07275 |
| Isotype | IgG |
| Reactivity | Human;Mouse |
| Applications | WB |
| Gene Name | CHODL C21orf68 PRED12 UNQ872/PRO1890 |
| Protein Name | Chondrolectin (Transmembrane protein MT75) |
| Immunogen | Synthesized peptide derived from human protein . at AA range: 140-220 |
| Specificity | CHODL Monoclonal Antibody detects endogenous levels of protein. |
| Formulation | Liquid in PBS containing 50% glycerol, and 0.02% sodium azide. |
| Source | Monoclonal, Mouse,IgG |
| Purification | The antibody was affinity-purified from mouse antiserum by affinity-chromatography using epitope-specific immunogen. |
| Dilution | WB 1:500-2000 |
| Concentration | 1 mg/ml |
| Purity | ≥90% |
| Storage Stability | -20°C/1 year |
| Synonyms | |
| Observed Band | 30kD |
| Cell Pathway | Cytoplasm . Membrane ; Single-pass type I membrane protein .; [Isoform 2]: Endoplasmic reticulum . Endoplasmic reticulum membrane ; Single-pass type I membrane protein .; [Isoform 3]: Cytoplasm . |
| Tissue Specificity | Found in spleen, testis, prostate and fetal liver. Expression limited to vascular muscle of testis, smooth muscle of prostate stroma, heart muscle, skeletal muscle, crypts of small intestine, and red pulp of spleen. B lymphocytes express isoform 2 only; peripheral blood T lymphocytes express isoform 3 only; granulocytes and monocytes express neither isoform 2 nor isoform 3. During development of T lymphocytes, bone marrow progenitor cells express isoform 2 only; thymocytes at different stages of maturation express predominantly isoform 2 and weakly isoform 3, and mature thymocytes express only isoform 2. |
| Function | online information:Chondrolectin,PTM:N-glycosylated.,similarity:Contains 1 C-type lectin domain.,tissue specificity:Found in spleen, testis, prostate and fetal liver. Expression limited to vascular muscle of testis, smooth muscle of prostate stroma, heart muscle, skeletal muscle, crypts of small intestine, and red pulp of |

Nanjing BYabscience technology Co.,Ltd



spleen.,

Background

This gene encodes a type I membrane protein with a carbohydrate recognition domain characteristic of C-type lectins in its extracellular portion. In other proteins, this domain is involved in endocytosis of glycoproteins and exogenous sugar-bearing pathogens. This protein localizes predominantly to the perinuclear region. Several transcript variants encoding a few different isoforms have been found for this gene. [provided by RefSeq, Feb 2011],

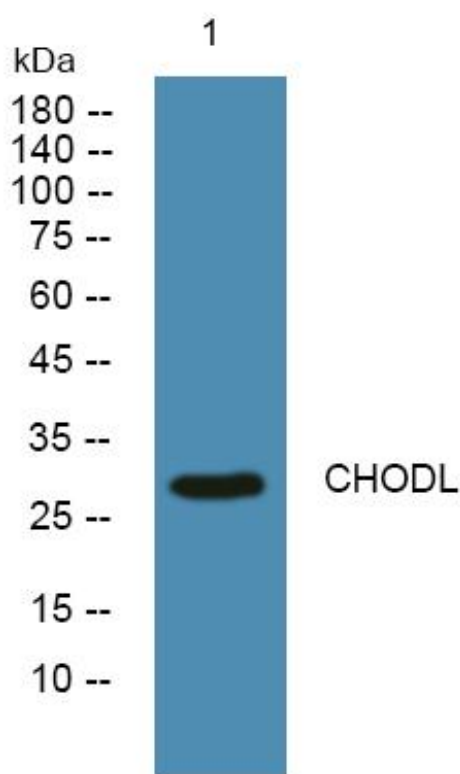
matters needing attention

Avoid repeated freezing and thawing!

Usage suggestions

This product can be used in immunological reaction related experiments. For more information, please consult technical personnel.

Products Images



Western Blot analysis of various cells using CHODL Monoclonal Antibody