



# ERR1 Monoclonal Antibody

Catalog No	BYmab-07262
Isotype	IgG
Reactivity	Human;Rat;Mouse
Applications	WB
Gene Name	ESRRA ERR1 ESRL1 NR3B1
Protein Name	Steroid hormone receptor ERR1 (Estrogen receptor-like 1) (Estrogen-related receptor alpha) (ERR-alpha) (Nuclear receptor subfamily 3 group B member 1)
Immunogen	Synthesized peptide derived from human protein . at AA range: 160-240
Specificity	ERR1 Monoclonal Antibody detects endogenous levels of protein.
Formulation	Liquid in PBS containing 50% glycerol, and 0.02% sodium azide.
Source	Monoclonal, Mouse,IgG
Purification	The antibody was affinity-purified from mouse antiserum by affinity-chromatography using epitope-specific immunogen.
Dilution	WB 1:500-2000
Concentration	1 mg/ml
Purity	≥90%
Storage Stability	-20°C/1 year
Synonyms	
Observed Band	46kD
Cell Pathway	Nucleus . Cytoplasm . Co-localizes to the cytoplasm only in presence of MAPK15.
Tissue Specificity	Brain,Cervix,Colon,Epithelium,Kidney,Lung,Placenta,Uterus,
Function	function: Binds to an ERR-alpha response element (ERRE) containing a single consensus half-site, 5'-TNAAGGTCA-3'. Can bind to the medium-chain acyl coenzyme A dehydrogenase (MCAD) response element NRRE-1 and may act as an important regulator of MCAD promoter. Binds to the C1 region of the lactoferrin gene promoter. Requires dimerization and the coactivator, PGC-1A, for full activity. The ERRalpha/PGC1alpha complex is a regulator of energy metabolism.,induction: Induced by PGC1alpha in a number of specific cell types including heart, kidney and muscle.,PTM: Phosphorylation on Ser-19 enhances sumoylation on Lys-14 increasing repression of transcriptional activity.,PTM: Sumoylated by SUMO2. Main site is Lys-14 which is enhanced by phosphorylation on Ser-19, cofactor activation, and by interaction with PIAS4.

Nanjing BYabscience technology Co.,Ltd



Sumoylation enhances repression of transcriptional activity, but has no effect on subcell

## Background

The protein encoded by this gene is a nuclear receptor that is closely related to the estrogen receptor. This protein acts as a site-specific transcription regulator and has been also shown to interact with estrogen and the transcription factor TFIIIB by direct protein-protein contact. The binding and regulatory activities of this protein have been demonstrated in the regulation of a variety of genes including lactoferrin, osteopontin, medium-chain acyl coenzyme A dehydrogenase (MCAD) and thyroid hormone receptor genes. A processed pseudogene of ESRRA is located on chromosome 13q12.1. Alternatively spliced transcript variants have been found for this gene. [provided by RefSeq, Sep 2013],

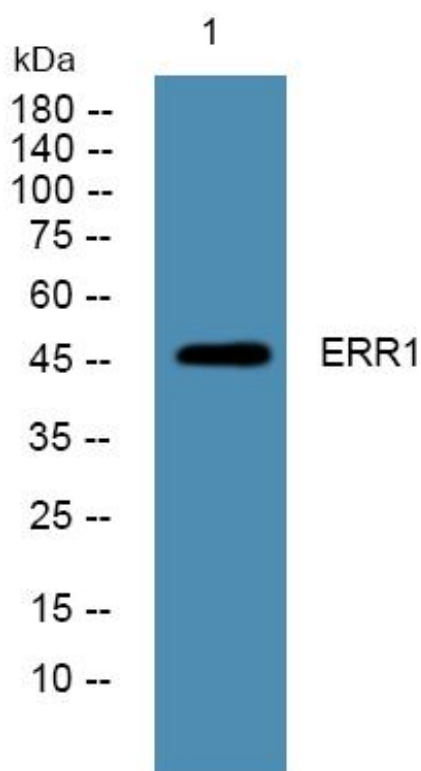
## matters needing attention

Avoid repeated freezing and thawing!

## Usage suggestions

This product can be used in immunological reaction related experiments. For more information, please consult technical personnel.

## Products Images



Western Blot analysis of various cells using ERR1 Monoclonal Antibody

Nanjing BYabscience technology Co.,Ltd