



LST8 Monoclonal Antibody

Catalog No	BYmab-07253
Isotype	IgG
Reactivity	Human;Rat;Mouse
Applications	WB
Gene Name	MLST8 GBL LST8
Protein Name	Target of rapamycin complex subunit LST8 (TORC subunit LST8) (G protein beta subunit-like) (Gable) (Protein GbetaL) (Mammalian lethal with SEC13 protein 8) (mLST8)
Immunogen	Synthesized peptide derived from human protein . at AA range: 100-180
Specificity	LST8 Monoclonal Antibody detects endogenous levels of protein.
Formulation	Liquid in PBS containing 50% glycerol, and 0.02% sodium azide.
Source	Monoclonal, Mouse,IgG
Purification	The antibody was affinity-purified from mouse antiserum by affinity-chromatography using epitope-specific immunogen.
Dilution	WB 1:500-2000
Concentration	1 mg/ml
Purity	≥90%
Storage Stability	-20°C/1 year
Synonyms	
Observed Band	35kD
Cell Pathway	Cytoplasm .
Tissue Specificity	Broadly expressed, with highest levels in skeletal muscle, heart and kidney.
Function	function:Unessential component of the TORC1 complex and essential component of the TORC2 complex. TORC1 controls cell growth in response to environmental signals, and is inactivated by nutrient limitation and environmental stress. Within TORC1, LST8 interacts directly with FRAP1 and enhances its kinase activity. In nutrient-poor conditions, stabilizes the FRAP1-RAPTOR interaction and favors RAPTOR-mediated inhibition of FRAP1 activity. TORC2 controls polarity of the actin cytoskeleton via the RAC1 pathway. TORC2 mediates phosphorylation of Akt/PKB on 'Ser-473' and phosphorylation of PKCalpha on 'Ser-657'. ,similarity:Belongs to the WD repeat LST8 family. ,similarity:Contains 7 WD repeats. ,subunit:Interacts with FRAP1, RAPTOR and RHEB. Part of the target of rapamycin complex 1 (TORC1) which contains LST8, FRAP1, RAPTOR

Nanjing BYabscience technology Co.,Ltd



and AKT1S1. TORC1 binds to and is inhibited by FKBP12-rapamycin. Part of

Background

function: Unessential component of the TORC1 complex and essential component of the TORC2 complex. TORC1 controls cell growth in response to environmental signals, and is inactivated by nutrient limitation and environmental stress. Within TORC1, LST8 interacts directly with FRAP1 and enhances its kinase activity. In nutrient-poor conditions, stabilizes the FRAP1-RAPTOR interaction and favors RAPTOR-mediated inhibition of FRAP1 activity. TORC2 controls polarity of the actin cytoskeleton via the RAC1 pathway. TORC2 mediates phosphorylation of Akt/PKB on 'Ser-473' and phosphorylation of PKCalpha on 'Ser-657'. similarity: Belongs to the WD repeat LST8 family. similarity: Contains 7 WD repeats. subunit: Interacts with FRAP1, RAPTOR and RHEB. Part of the target of rapamycin complex 1 (TORC1) which contains LST8, FRAP1, RAPTOR and AKT1S1. TORC1 binds to and is inhibited by FKBP12-rapamycin. Part of the target of rapamycin complex 2 (TORC2) which contains FRAP1, LST8, PROTOR1, RICTOR and MAPKAP1. Contrary to TORC1, TORC2 does not bind to and is not sensitive to FKBP12-rapamycin. tissue specificity: Broadly expressed, with highest levels in skeletal muscle, heart and kidney.

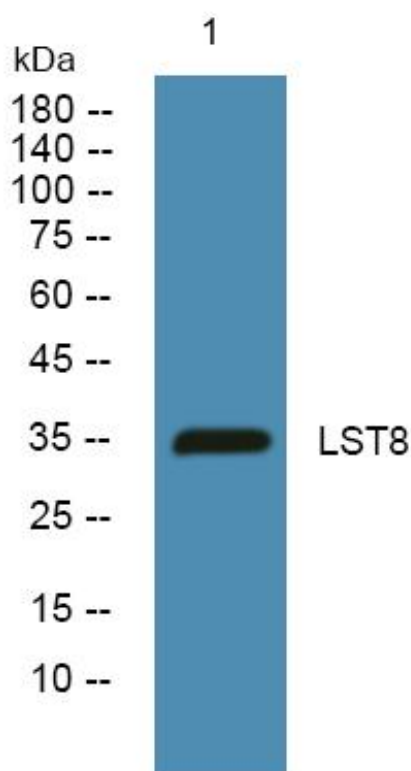
matters needing attention

Avoid repeated freezing and thawing!

Usage suggestions

This product can be used in immunological reaction related experiments. For more information, please consult technical personnel.

Products Images



Western Blot analysis of various cells using LST8 Monoclonal Antibody

Nanjing BYabscience technology Co.,Ltd