



# SLAF6 Monoclonal Antibody

Catalog No	BYmab-07249
Isotype	IgG
Reactivity	Human;Mouse
Applications	WB
Gene Name	SLAMF6 KALI UNQ6123/PRO20080
Protein Name	SLAM family member 6 (Activating NK receptor) (NK-T-B-antigen) (NTB-A) (CD antigen CD352)
Immunogen	Synthesized peptide derived from human protein . at AA range: 20-100
Specificity	SLAF6 Monoclonal Antibody detects endogenous levels of protein.
Formulation	Liquid in PBS containing 50% glycerol, and 0.02% sodium azide.
Source	Monoclonal, Mouse,IgG
Purification	The antibody was affinity-purified from mouse antiserum by affinity-chromatography using epitope-specific immunogen.
Dilution	WB 1:500-2000
Concentration	1 mg/ml
Purity	≥90%
Storage Stability	-20°C/1 year
Synonyms	
Observed Band	36kD
Cell Pathway	Cell membrane ; Single-pass type I membrane protein .
Tissue Specificity	Expressed by all (resting and activated) natural killer cells (NK), T- and B-lymphocytes (PubMed:11489943). Increased surface expression on T-cells of systemic lupus erythematosus (SLE) patients (PubMed:22184727).
Function	function:Triggers cytolytic activity only in natural killer cells (NK) expressing high surface densities of natural cytotoxicity receptors.,PTM:Phosphorylated.,similarity:Contains 1 Ig-like (immunoglobulin-like) domain.,subunit:Homodimer. Interacts with PTN6 and, upon phosphorylation, with PTN11 and SH2D1A/SAP.,tissue specificity:Expressed by all (resting and activated) natural killer cells (NK), T- and B-lymphocytes.,
Background	The protein encoded by this gene is a type I transmembrane protein, belonging to the CD2 subfamily of the immunoglobulin superfamily. This encoded protein is expressed on Natural killer (NK), T, and B lymphocytes. It undergoes tyrosine

Nanjing BYabscience technology Co.,Ltd



phosphorylation and associates with the Src homology 2 domain-containing protein (SH2D1A) as well as with SH2 domain-containing phosphatases (SHPs). It functions as a coreceptor in the process of NK cell activation. It can also mediate inhibitory signals in NK cells from X-linked lymphoproliferative patients. Alternative splicing results in multiple transcript variants encoding distinct isoforms.[provided by RefSeq, May 2010],

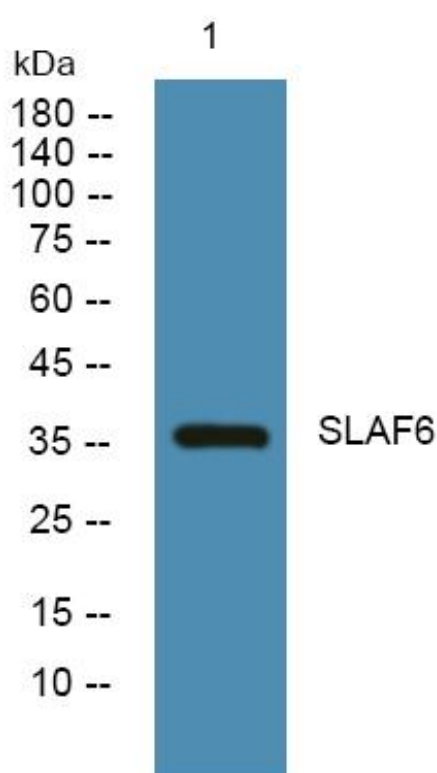
**matters needing attention**

Avoid repeated freezing and thawing!

**Usage suggestions**

This product can be used in immunological reaction related experiments. For more information, please consult technical personnel.

## Products Images



Western Blot analysis of various cells using SLAF6 Monoclonal Antibody