



ELAF Monoclonal Antibody

| | |
|--------------------|---|
| Catalog No | BYmab-07235 |
| Isotype | IgG |
| Reactivity | Human;Rat;Mouse; |
| Applications | WB |
| Gene Name | PI3 WAP3 WFDC14 |
| Protein Name | Elafin (Elastase-specific inhibitor) (ESI) (Peptidase inhibitor 3) (PI-3) (Protease inhibitor WAP3) (Skin-derived antileukoproteinase) (SKALP) (WAP four-disulfide core domain protein 14) |
| Immunogen | Synthesized peptide derived from human protein . at AA range: 40-120 |
| Specificity | ELAF Monoclonal Antibody detects endogenous levels of protein. |
| Formulation | Liquid in PBS containing 50% glycerol, and 0.02% sodium azide. |
| Source | Monoclonal, Mouse,IgG |
| Purification | The antibody was affinity-purified from mouse antiserum by affinity-chromatography using epitope-specific immunogen. |
| Dilution | WB 1:500-2000 |
| Concentration | 1 mg/ml |
| Purity | ≥90% |
| Storage Stability | -20°C/1 year |
| Synonyms | |
| Observed Band | 12kD |
| Cell Pathway | Secreted. |
| Tissue Specificity | Brain,Keratinocyte,Placenta,Sputum,Stratum corneum, |
| Function | domain:Consists of two domains: the transglutaminase substrate domain (cementoin moiety) and the elastase inhibitor domain. The transglutaminase substrate domain serves as an anchor to localize elafin covalently to specific sites on extracellular matrix proteins.,function:Neutrophil and pancreatic elastase-specific inhibitor of skin. It may prevent elastase-mediated tissue proteolysis.,similarity:Contains 1 WAP domain., |
| Background | This gene encodes an elastase-specific inhibitor that functions as an antimicrobial peptide against Gram-positive and Gram-negative bacteria, and fungal pathogens. The protein contains a WAP-type four-disulfide core (WFDC) domain, and is thus a member of the WFDC domain family. Most WFDC gene |

Nanjing BYabscience technology Co.,Ltd



members are localized to chromosome 20q12-q13 in two clusters: centromeric and telomeric. This gene belongs to the centromeric cluster. Expression of this gene is upregulated by bacterial lipopolysaccharides and cytokines. [provided by RefSeq, Oct 2014],

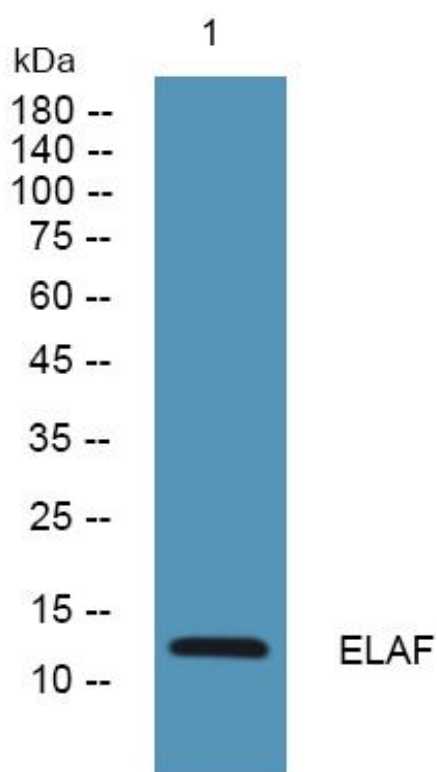
matters needing attention

Avoid repeated freezing and thawing!

Usage suggestions

This product can be used in immunological reaction related experiments. For more information, please consult technical personnel.

Products Images



Western Blot analysis of various cells using ELAF Monoclonal Antibody