



FKBP2 Monoclonal Antibody

Catalog No	BYmab-07226
Isotype	IgG
Reactivity	Human;Mouse
Applications	WB
Gene Name	FKBP2 FKBP13
Protein Name	Peptidyl-prolyl cis-trans isomerase FKBP2 (PPIase FKBP2) (EC 5.2.1.8) (13 kDa FK506-binding protein) (13 kDa FKBP) (FKBP-13) (FK506-binding protein 2) (FKBP-2) (Immunophilin FKBP13) (Rotamase)
Immunogen	Synthesized peptide derived from human protein . at AA range: 80-160
Specificity	FKBP2 Monoclonal Antibody detects endogenous levels of protein.
Formulation	Liquid in PBS containing 50% glycerol, and 0.02% sodium azide.
Source	Monoclonal, Mouse,IgG
Purification	The antibody was affinity-purified from mouse antiserum by affinity-chromatography using epitope-specific immunogen.
Dilution	WB 1:500-2000
Concentration	1 mg/ml
Purity	≥90%
Storage Stability	-20°C/1 year
Synonyms	
Observed Band	15kD
Cell Pathway	Endoplasmic reticulum membrane ; Peripheral membrane protein .
Tissue Specificity	T-cells and thymus.
Function	catalytic activity:Peptidylproline (omega=180) = peptidylproline (omega=0).,enzyme regulation:Inhibited by both FK506 and rapamycin.,function:PPIases accelerate the folding of proteins. It catalyzes the cis-trans isomerization of proline imidic peptide bonds in oligopeptides.,similarity:Belongs to the FKBP-type PPIase family.,similarity:Belongs to the FKBP-type PPIase family. FKBP2 subfamily.,similarity:Contains 1 PPIase FKBP-type domain.,subunit:Interacts with ARFGEF1/BIG1 and the C-terminal of EPB41L2.,tissue specificity:T-cells and thymus.,

Nanjing BYabscience technology Co.,Ltd



Background

The protein encoded by this gene is a member of the immunophilin protein family, which play a role in immunoregulation and basic cellular processes involving protein folding and trafficking. This encoded protein is a cis-trans prolyl isomerase that binds the immunosuppressants FK506 and rapamycin. It is thought to function as an ER chaperone and may also act as a component of membrane cytoskeletal scaffolds. Multiple alternatively spliced variants, encoding the same protein, have been identified. [provided by RefSeq, Sep 2008],

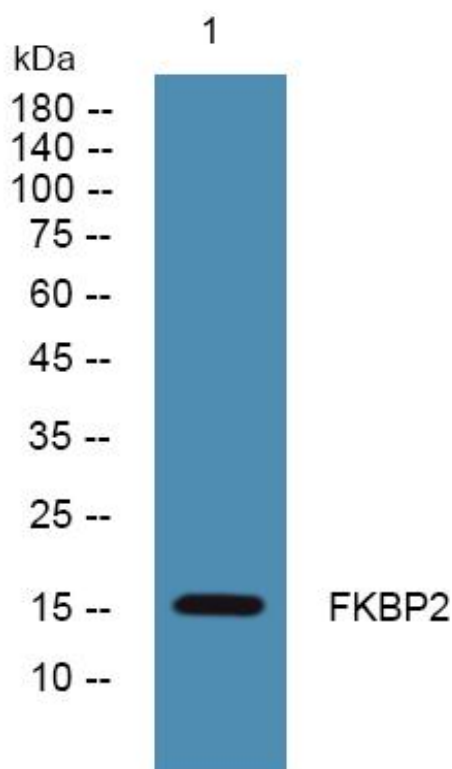
matters needing attention

Avoid repeated freezing and thawing!

Usage suggestions

This product can be used in immunological reaction related experiments. For more information, please consult technical personnel.

Products Images



Western Blot analysis of various cells using FKBP2 Monoclonal Antibody