



DRA Monoclonal Antibody

Catalog No	BYmab-07207
Isotype	IgG
Reactivity	Human;Rat;Mouse;
Applications	WB
Gene Name	HLA-DRA HLA-DRA1
Protein Name	HLA class II histocompatibility antigen, DR alpha chain (MHC class II antigen DRA)
Immunogen	Synthesized peptide derived from human protein . at AA range: 100-180
Specificity	DRA Monoclonal Antibody detects endogenous levels of protein.
Formulation	Liquid in PBS containing 50% glycerol, and 0.02% sodium azide.
Source	Monoclonal, Mouse,IgG
Purification	The antibody was affinity-purified from mouse antiserum by affinity-chromatography using epitope-specific immunogen.
Dilution	WB 1:500-2000
Concentration	1 mg/ml
Purity	≥90%
Storage Stability	-20°C/1 year
Synonyms	
Observed Band	27kD
Cell Pathway	Cell membrane ; Single-pass type I membrane protein . Endoplasmic reticulum membrane ; Single-pass type I membrane protein . Early endosome membrane ; Single-pass type I membrane protein . Late endosome membrane ; Single-pass type I membrane protein . Lysosome membrane ; Single-pass type I membrane protein . Autolysosome membrane ; Single-pass type I membrane protein. The MHCII complex transits through a number of intracellular compartments in the endocytic pathway until it reaches the cell membrane for antigen presentation (PubMed:9075930, PubMed:18305173). Component of immunological synapses at the interface between T cell and APC (PubMed:15322540, PubMed:29884618). .
Tissue Specificity	Expressed in professional APCs: macrophages, dendritic cells and B cells (at protein level) (PubMed:31495665, PubMed:15322540, PubMed:23783831). Expressed in thymic epithelial cells (at protein level) (PubMed:23783831).
Function	disease:Genetic variations in HLA-DRA are associated with susceptibility to hepatitis B virus infection (HBV infection) [MIM:610424]. Approximately one third

Nanjing BYabscience technology Co.,Ltd



of all cases of cirrhosis and half of all cases of hepatocellular carcinoma can be attributed to chronic HBV infection. HBV infection may result in subclinical or asymptomatic infection, acute self-limited hepatitis, or fulminant hepatitis requiring liver transplantation. polymorphism: The following alleles of DRA are known: DRA*0101 and DRA*0102. The sequence shown is that of DRA*0101. similarity: Belongs to the MHC class II family. similarity: Contains 1 Ig-like C1-type (immunoglobulin-like) domain. subunit: Heterodimer of an alpha chain and a beta chain.

Background

HLA-DRA is one of the HLA class II alpha chain paralogues. This class II molecule is a heterodimer consisting of an alpha and a beta chain, both anchored in the membrane. It plays a central role in the immune system by presenting peptides derived from extracellular proteins. Class II molecules are expressed in antigen presenting cells (APC: B lymphocytes, dendritic cells, macrophages). The alpha chain is approximately 33-35 kDa and its gene contains 5 exons. Exon 1 encodes the leader peptide, exons 2 and 3 encode the two extracellular domains, and exon 4 encodes the transmembrane domain and the cytoplasmic tail. DRA does not have polymorphisms in the peptide binding part and acts as the sole alpha chain for DRB1, DRB3, DRB4 and DRB5. [provided by RefSeq, Jul 2008],

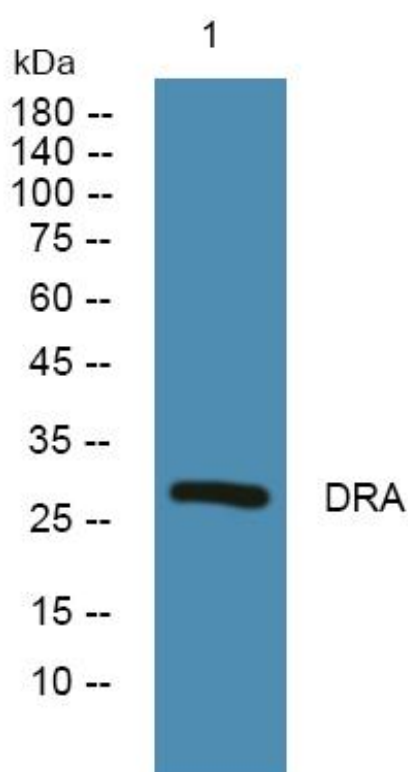
matters needing attention

Avoid repeated freezing and thawing!

Usage suggestions

This product can be used in immunological reaction related experiments. For more information, please consult technical personnel.

Products Images



Western Blot analysis of various cells using DRA Monoclonal Antibody

Nanjing BYabscience technology Co.,Ltd