



# IGS11 Monoclonal Antibody

<b>Catalog No</b>	BYmab-07187
<b>Isotype</b>	IgG
<b>Reactivity</b>	Human;Rat;Mouse
<b>Applications</b>	WB
<b>Gene Name</b>	IGSF11 BTIGSF CXADRL1 VSIG3
<b>Protein Name</b>	Immunoglobulin superfamily member 11 (IgSF11) (Brain and testis-specific immunoglobulin superfamily protein) (Bt-IGSF) (V-set and immunoglobulin domain-containing protein 3)
<b>Immunogen</b>	Synthesized peptide derived from human protein . at AA range: 110-190
<b>Specificity</b>	IGS11 Monoclonal Antibody detects endogenous levels of protein.
<b>Formulation</b>	Liquid in PBS containing 50% glycerol, and 0.02% sodium azide.
<b>Source</b>	Monoclonal, Mouse,IgG
<b>Purification</b>	The antibody was affinity-purified from mouse antiserum by affinity-chromatography using epitope-specific immunogen.
<b>Dilution</b>	WB 1:500-2000
<b>Concentration</b>	1 mg/ml
<b>Purity</b>	≥90%
<b>Storage Stability</b>	-20°C/1 year
<b>Synonyms</b>	
<b>Observed Band</b>	47kD
<b>Cell Pathway</b>	Cell membrane ; Single-pass type I membrane protein .
<b>Tissue Specificity</b>	Abundantly expressed in testis and ovary and to a lower extent in brain, kidney and skeletal muscle.
<b>Function</b>	function:Functions as a cell adhesion molecule through homophilic interaction. Stimulates cell growth.,miscellaneous:The last 20 cytoplasmic amino-acids are not required for the cell adhesion function.,PTM:N-glycosylated.,similarity:Contains 1 Ig-like C2-type (immunoglobulin-like) domain.,similarity:Contains 1 Ig-like V-type (immunoglobulin-like) domain.,tissue specificity:Abundantly expressed in testis and ovary and to a lower extent in brain, kidney and skeletal muscle.,
<b>Background</b>	IGSF11 is an immunoglobulin (Ig) superfamily member that is preferentially expressed in brain and testis. It shares significant homology with coxsackievirus and adenovirus receptor (CXADR; MIM 602621) and endothelial cell-selective

**Nanjing BYabscience technology Co.,Ltd**



adhesion molecule (ESAM).[supplied by OMIM, Apr 2005],

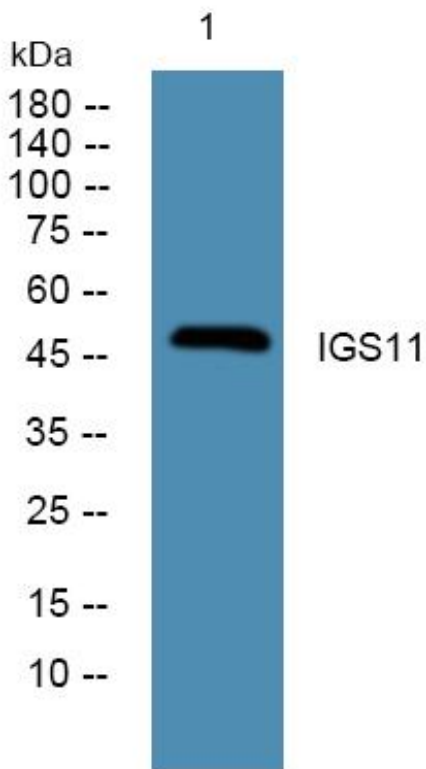
**matters needing attention**

Avoid repeated freezing and thawing!

**Usage suggestions**

This product can be used in immunological reaction related experiments. For more information, please consult technical personnel.

## Products Images



Western Blot analysis of various cells using IGS11 Monoclonal Antibody