



CRHBP Monoclonal Antibody

Catalog No	BYmab-07183
Isotype	IgG
Reactivity	Human;Rat;Mouse
Applications	WB
Gene Name	CRHBP CRFBP
Protein Name	Corticotropin-releasing factor-binding protein (CRF-BP) (CRF-binding protein) (Corticotropin-releasing hormone-binding protein) (CRH-BP)
Immunogen	Synthesized peptide derived from human protein . at AA range: 70-150
Specificity	CRHBP Monoclonal Antibody detects endogenous levels of protein.
Formulation	Liquid in PBS containing 50% glycerol, and 0.02% sodium azide.
Source	Monoclonal, Mouse,IgG
Purification	The antibody was affinity-purified from mouse antiserum by affinity-chromatography using epitope-specific immunogen.
Dilution	WB 1:500-2000
Concentration	1 mg/ml
Purity	≥90%
Storage Stability	-20°C/1 year
Synonyms	
Observed Band	35kD
Cell Pathway	Secreted.
Tissue Specificity	Hippocampus,Kidney,Liver,
Function	function:Binds CRF and inactivates it. May prevent inappropriate pituitary-adrenal stimulation in pregnancy.,
Background	Corticotropin-releasing hormone is a potent stimulator of synthesis and secretion of preopiomelanocortin-derived peptides. Although CRH concentrations in the human peripheral circulation are normally low, they increase throughout pregnancy and fall rapidly after parturition. Maternal plasma CRH probably originates from the placenta. Human plasma contains a CRH-binding protein which inactivates CRH and which may prevent inappropriate pituitary-adrenal stimulation in pregnancy. [provided by RefSeq, Jul 2008],

Nanjing BYabscience technology Co.,Ltd

网址: www.njbybio.com

官方热线: 025-5229-8998

监督电话: 15950492658



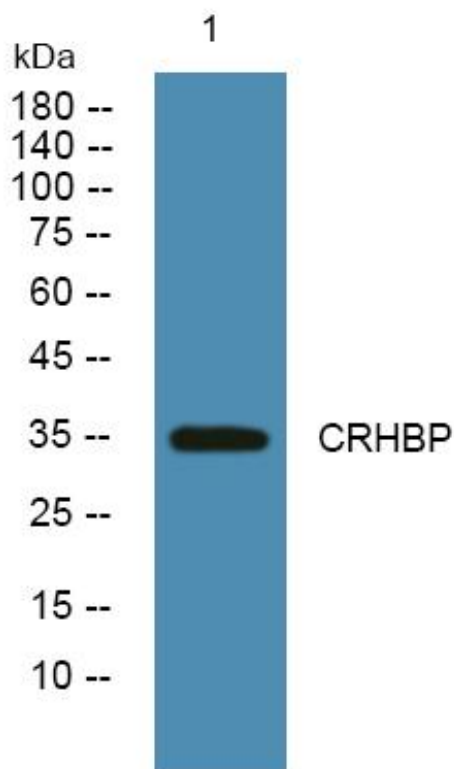
matters needing attention

Avoid repeated freezing and thawing!

Usage suggestions

This product can be used in immunological reaction related experiments. For more information, please consult technical personnel.

Products Images



Western Blot analysis of various cells using CRHBP Monoclonal Antibody